

Datasheet for ABIN1534391
anti-CYP2S1 antibody (AA 181-230)[Go to Product page](#)

3 Images

Overview

Quantity:	100 µg
Target:	CYP2S1
Binding Specificity:	AA 181-230
Reactivity:	Human, Mouse
Host:	Rabbit
Clonality:	Polyclonal
Conjugate:	This CYP2S1 antibody is un-conjugated
Application:	Western Blotting (WB), Immunohistochemistry (IHC), Immunofluorescence (IF), ELISA

Product Details

Immunogen:	The antiserum was produced against synthesized peptide derived from human Cytochrome P450 2S1.
Isotype:	IgG
Specificity:	Cytochrome P450 2S1 Antibody detects endogenous levels of total Cytochrome P450 2S1 protein.
Purification:	The antibody was purified from rabbit antiserum by affinity-chromatography using immunogen.
Purity:	> 95 %

Target Details

Target:	CYP2S1
---------	--------

Target Details

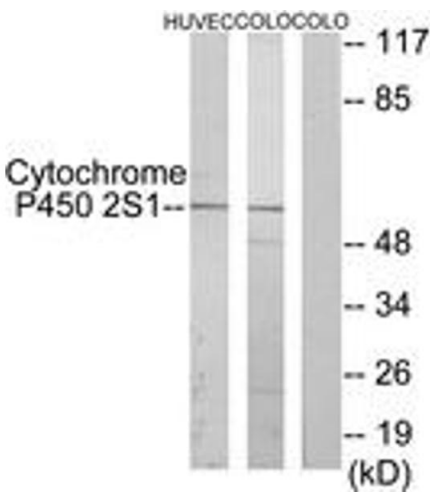
Alternative Name:	Cytochrome P450 2S1 (CYP2S1 Products)
Background:	Synonyms: Cytochrome P450 2S1, CYP11S1, CP2S1 NCBI Gene Symbol: CYP2S1
Molecular Weight:	55 kDa
Gene ID:	29785
OMIM:	611529
UniProt:	Q96SQ9

Application Details

Application Notes:	WB: 1:500~1:1000 IHC: 1:50~1:100 IF: 1:100~1:500 ELISA: 1:5000
Comment:	Unigene-Number: Hs.98370 (NCBI Gene Symbol: CYP2S1)
Restrictions:	For Research Use only

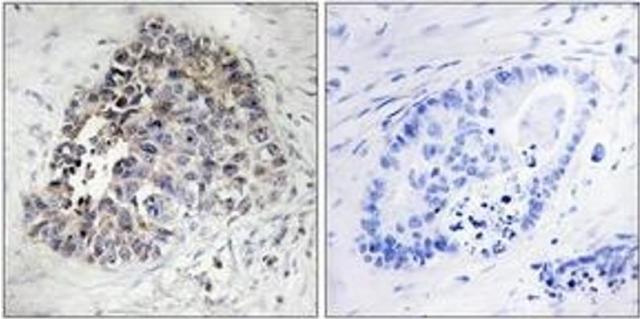
Handling

Format:	Liquid
Concentration:	1 mg/mL
Buffer:	phosphate buffered saline (without Mg ²⁺ and Ca ²⁺), pH 7.4, 150 mM NaCl, 0.02 % sodium azide and 50 % glycerol.
Preservative:	Sodium azide
Precaution of Use:	This product contains sodium azide: a POISONOUS AND HAZARDOUS SUBSTANCE which should be handled by trained staff only.
Storage:	-20 °C
Storage Comment:	Stable at -20°C for at least 1 year.
Expiry Date:	12 months



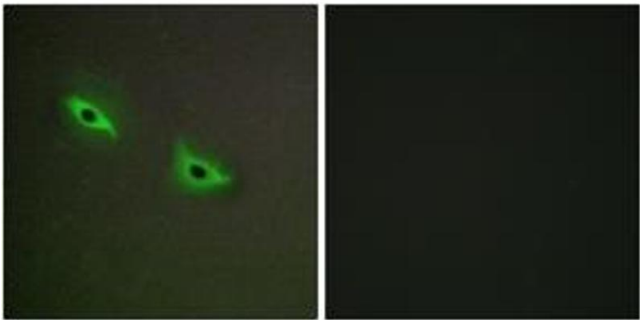
Western Blotting

Image 1. Western blot analysis of extracts from HuvEc/COLO cells, using Cytochrome P450 2S1 Antibody. The lane on the right is treated with the synthesized peptide.



Immunohistochemistry

Image 2. Immunohistochemistry analysis of paraffin-embedded human lung carcinoma tissue, using Cytochrome P450 2S1 Antibody. The picture on the right is treated with the synthesized peptide.



Immunofluorescence

Image 3. Immunofluorescence analysis of A549 cells, using Cytochrome P450 2S1 Antibody. The picture on the right is treated with the synthesized peptide.