

Datasheet for ABIN1534392  
**anti-CYP2U1 antibody (AA 281-330)**[Go to Product page](#)

## 1 Image

## Overview

Quantity:	100 µg
Target:	CYP2U1
Binding Specificity:	AA 281-330
Reactivity:	Human, Rat, Mouse
Host:	Rabbit
Clonality:	Polyclonal
Conjugate:	This CYP2U1 antibody is un-conjugated
Application:	ELISA, Western Blotting (WB)

## Product Details

Immunogen:	The antiserum was produced against synthesized peptide derived from human Cytochrome P450 2U1.
Isotype:	IgG
Specificity:	Cytochrome P450 2U1 Antibody detects endogenous levels of total Cytochrome P450 2U1 protein.
Purification:	The antibody was purified from rabbit antiserum by affinity-chromatography using immunogen.
Purity:	> 95 %

## Target Details

Target:	CYP2U1
---------	--------

## Target Details

Alternative Name: Cytochrome P450 2U1 ([CYP2U1 Products](#))

Background: Synonyms: Cytochrome P450 2U1, CP2U1  
NCBI Gene Symbol: CYP2U1

Molecular Weight: 61 kDa

Gene ID: 113612

OMIM: 610670

UniProt: [Q7Z449](#)

## Application Details

Application Notes: WB: 1:500~1:1000 ELISA: 1:20000

Comment: Unigene-Number: Hs.109087 (NCBI Gene Symbol: CYP2U1)

Restrictions: For Research Use only

## Handling

Format: Liquid

Concentration: 1 mg/mL

Buffer: phosphate buffered saline (without Mg<sup>2+</sup> and Ca<sup>2+</sup>), pH 7.4, 150 mM NaCl, 0.02 % sodium azide and 50 % glycerol.

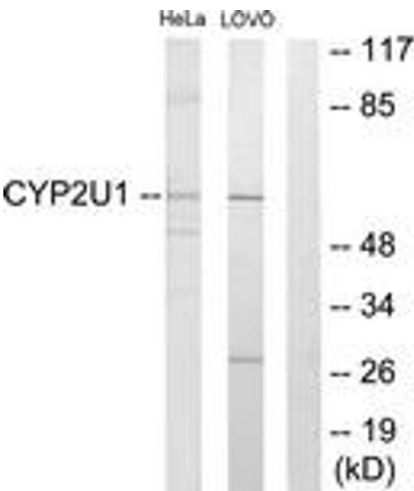
Preservative: Sodium azide

Precaution of Use: This product contains sodium azide: a POISONOUS AND HAZARDOUS SUBSTANCE which should be handled by trained staff only.

Storage: -20 °C

Storage Comment: Stable at -20°C for at least 1 year.

Expiry Date: 12 months



Western Blotting

**Image 1.** Western blot analysis of extracts from HeLa/LoVo cells, using Cytochrome P450 2U1 Antibody. The lane on the right is treated with the synthesized peptide.