

Datasheet for ABIN1534393
anti-CYP2W1 antibody (AA 311-360)[Go to Product page](#)

2 Images

Overview

Quantity:	100 µg
Target:	CYP2W1
Binding Specificity:	AA 311-360
Reactivity:	Human
Host:	Rabbit
Clonality:	Polyclonal
Conjugate:	This CYP2W1 antibody is un-conjugated
Application:	Immunohistochemistry (IHC), ELISA, Immunofluorescence (IF)

Product Details

Immunogen:	The antiserum was produced against synthesized peptide derived from human Cytochrome P450 2W1.
Isotype:	IgG
Specificity:	Cytochrome P450 2W1 Antibody detects endogenous levels of total Cytochrome P450 2W1 protein.
Purification:	The antibody was purified from rabbit antiserum by affinity-chromatography using immunogen.
Purity:	> 95 %

Target Details

Target:	CYP2W1
---------	--------

Target Details

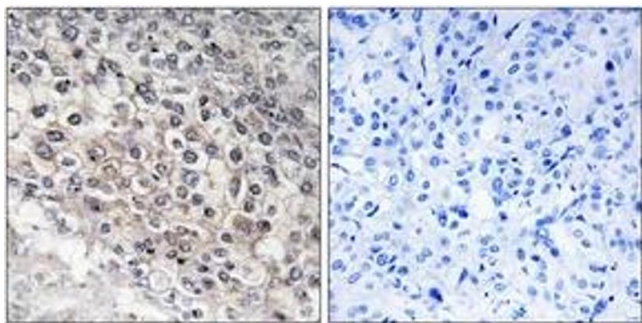
Alternative Name:	Cytochrome P450 2W1 (CYP2W1 Products)
Background:	Synonyms: Cytochrome P450 2W1, CYP1IW1, CP2W1 NCBI Gene Symbol: CYP2W1
Molecular Weight:	53 kDa
Gene ID:	54905
UniProt:	Q8TAV3

Application Details

Application Notes:	IHC: 1:50~1:100 IF: 1:100~1:500 ELISA: 1:40000
Comment:	Unigene-Number: Hs.272795 (NCBI Gene Symbol: CYP2W1)
Restrictions:	For Research Use only

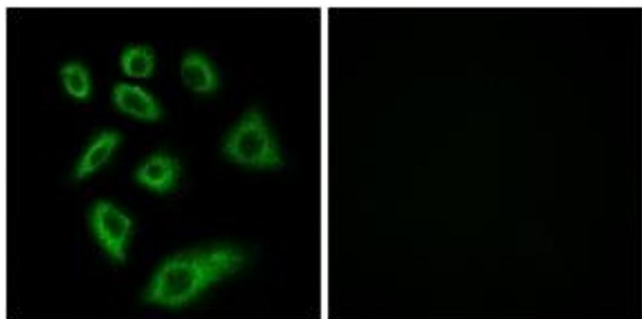
Handling

Format:	Liquid
Concentration:	1 mg/mL
Buffer:	phosphate buffered saline (without Mg ²⁺ and Ca ²⁺), pH 7.4, 150 mM NaCl, 0.02 % sodium azide and 50 % glycerol.
Preservative:	Sodium azide
Precaution of Use:	This product contains sodium azide: a POISONOUS AND HAZARDOUS SUBSTANCE which should be handled by trained staff only.
Storage:	-20 °C
Storage Comment:	Stable at -20°C for at least 1 year.
Expiry Date:	12 months



Immunohistochemistry

Image 1. Immunohistochemistry analysis of paraffin-embedded human liver carcinoma tissue, using Cytochrome P450 2W1 Antibody. The picture on the right is treated with the synthesized peptide.



Immunofluorescence

Image 2. Immunofluorescence analysis of HuvEc cells, using Cytochrome P450 2W1 Antibody. The picture on the right is treated with the synthesized peptide.