

Datasheet for ABIN1534395

anti-CYP39A1 antibody (AA 361-410)[Go to Product page](#)**2** Images

Overview

Quantity:	100 µL
Target:	CYP39A1
Binding Specificity:	AA 361-410
Reactivity:	Human, Mouse
Host:	Rabbit
Clonality:	Polyclonal
Conjugate:	This CYP39A1 antibody is un-conjugated
Application:	ELISA, Western Blotting (WB), Immunofluorescence (IF)

Product Details

Immunogen:	The antiserum was produced against synthesized peptide derived from human Cytochrome P450 39A1.
Isotype:	IgG
Specificity:	Cytochrome P450 39A1 Antibody detects endogenous levels of total Cytochrome P450 39A1 protein.
Purification:	The antibody was purified from rabbit antiserum by affinity-chromatography using immunogen.
Purity:	> 95 %

Target Details

Target:	CYP39A1
---------	---------

Target Details

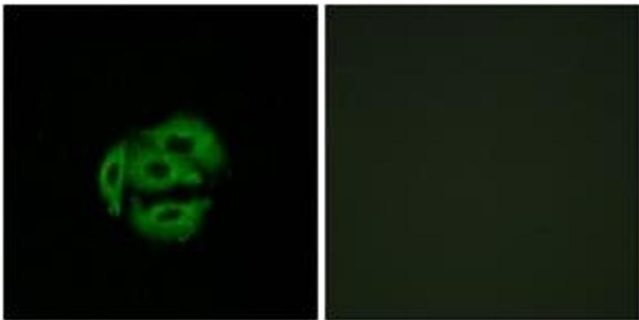
Alternative Name:	Cytochrome P450 39A1 (CYP39A1 Products)
Background:	Synonyms: Cytochrome P450 39A1, 24-hydroxycholesterol 7-alpha-hydroxylase, Oxysterol 7-alpha-hydroxylase, Hcyp39a1, CP39A NCBI Gene Symbol: CYP39A1
Molecular Weight:	54 kDa
Gene ID:	51302
OMIM:	605994
UniProt:	Q9NYL5
Pathways:	Monocarboxylic Acid Catabolic Process

Application Details

Application Notes:	WB: 1:500~1:1000 IF: 1:100~1:500 ELISA: 1:10000
Comment:	Unigene-Number: Hs.387367 (NCBI Gene Symbol: CYP39A1)
Restrictions:	For Research Use only

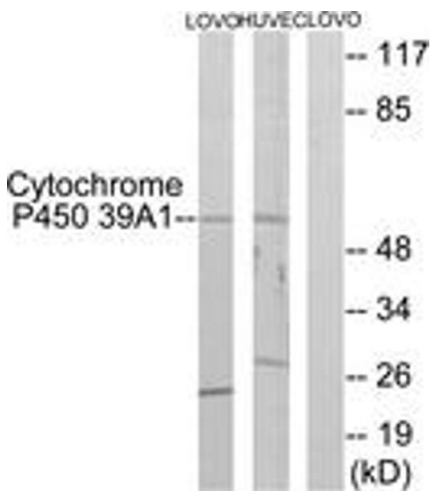
Handling

Format:	Liquid
Concentration:	1 mg/mL
Buffer:	phosphate buffered saline (without Mg2+ and Ca2+), pH 7.4, 150 mM NaCl, 0.02 % sodium azide and 50 % glycerol.
Preservative:	Sodium azide
Precaution of Use:	This product contains sodium azide: a POISONOUS AND HAZARDOUS SUBSTANCE which should be handled by trained staff only.
Storage:	-20 °C
Storage Comment:	Stable at -20°C for at least 1 year.
Expiry Date:	12 months



Immunofluorescence

Image 1. Immunofluorescence analysis of A549 cells, using Cytochrome P450 39A1 Antibody. The picture on the right is treated with the synthesized peptide.



Western Blotting

Image 2. Western blot analysis of extracts from LOVO/HuVc cells, using Cytochrome P450 39A1 Antibody. The lane on the right is treated with the synthesized peptide.