

Datasheet for ABIN1534398
anti-CYP4B1 antibody (AA 141-190)[Go to Product page](#)

2 Images

Overview

Quantity:	100 µg
Target:	CYP4B1
Binding Specificity:	AA 141-190
Reactivity:	Human
Host:	Rabbit
Clonality:	Polyclonal
Conjugate:	This CYP4B1 antibody is un-conjugated
Application:	Western Blotting (WB), Immunohistochemistry (IHC), ELISA

Product Details

Immunogen:	The antiserum was produced against synthesized peptide derived from human Cytochrome P450 4B1.
Isotype:	IgG
Specificity:	Cytochrome P450 4B1 Antibody detects endogenous levels of total Cytochrome P450 4B1 protein.
Purification:	The antibody was purified from rabbit antiserum by affinity-chromatography using immunogen.
Purity:	> 95 %

Target Details

Target:	CYP4B1
---------	--------

Target Details

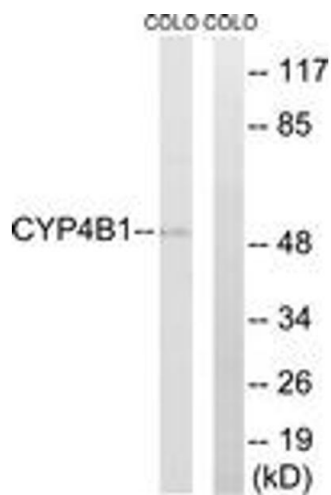
Alternative Name:	Cytochrome P450 4B1 (CYP4B1 Products)
Background:	Synonyms: Cytochrome P450 4B1, CYP4B1, P450-HP, CYP4B1, CP4B1 NCBI Gene Symbol: CYP4B1
Molecular Weight:	58 kDa
Gene ID:	1580
OMIM:	124075
UniProt:	P13584

Application Details

Application Notes:	WB: 1:500~1:1000 IHC: 1:50~1:100 ELISA: 1:40000
Comment:	Unigene-Number: Hs.436317 (NCBI Gene Symbol: CYP4B1)
Restrictions:	For Research Use only

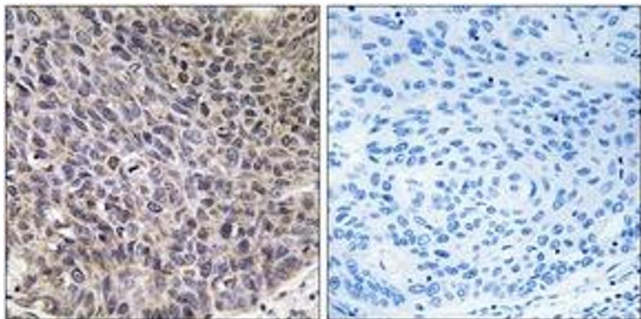
Handling

Format:	Liquid
Concentration:	1 mg/mL
Buffer:	phosphate buffered saline (without Mg ²⁺ and Ca ²⁺), pH 7.4, 150 mM NaCl, 0.02 % sodium azide and 50 % glycerol.
Preservative:	Sodium azide
Precaution of Use:	This product contains sodium azide: a POISONOUS AND HAZARDOUS SUBSTANCE which should be handled by trained staff only.
Storage:	-20 °C
Storage Comment:	Stable at -20°C for at least 1 year.
Expiry Date:	12 months



Western Blotting

Image 1. Western blot analysis of extracts from COLO cells, using Cytochrome P450 4B1 Antibody. The lane on the right is treated with the synthesized peptide.



Immunohistochemistry

Image 2. Immunohistochemistry analysis of paraffin-embedded human lung carcinoma tissue, using Cytochrome P450 4B1 Antibody. The picture on the right is treated with the synthesized peptide.