



[Go to Product page](#)

Datasheet for ABIN1534399  
**anti-CYP4F2 antibody (AA 41-90)**

1 Image

Overview

Quantity:	100 µL
Target:	CYP4F2
Binding Specificity:	AA 41-90
Reactivity:	Human
Host:	Rabbit
Clonality:	Polyclonal
Conjugate:	This CYP4F2 antibody is un-conjugated
Application:	ELISA, Immunohistochemistry (IHC)

Product Details

Immunogen:	The antiserum was produced against synthesized peptide derived from human CYP4F2.
Isotype:	IgG
Specificity:	Cytochrome P450 4F2 Antibody detects endogenous levels of total Cytochrome P450 4F2 protein.
Purification:	The antibody was purified from rabbit antiserum by affinity-chromatography using immunogen.
Purity:	> 95 %

Target Details

Target:	CYP4F2
Alternative Name:	Cytochrome P450 4F2 ( <a href="#">CYP4F2 Products</a> )

## Target Details

---

Background: Synonyms: Leukotriene-B(4) omega-hydroxylase 1, Cytochrome P450 4F2, CYP4F2, Leukotriene-B(4) 20-monooxygenase 1, Cytochrome P450-LTB-omega  
NCBI Gene Symbol: CYP4F2

---

Molecular Weight: 59 kDa

---

Gene ID: 8529

---

OMIM: 604426

---

UniProt: [P78329](#)

---

Pathways: [Monocarboxylic Acid Catabolic Process](#)

---

## Application Details

---

Application Notes: IHC: 1:50~1:100 ELISA: 1:40000

---

Comment: Unigene-Number: Hs.558423 (NCBI Gene Symbol: CYP4F2)

---

Restrictions: For Research Use only

---

## Handling

---

Format: Liquid

---

Concentration: 1 mg/mL

---

Buffer: phosphate buffered saline (without Mg<sup>2+</sup> and Ca<sup>2+</sup>), pH 7.4, 150 mM NaCl, 0.02 % sodium azide and 50 % glycerol.

---

Preservative: Sodium azide

---

Precaution of Use: This product contains sodium azide: a POISONOUS AND HAZARDOUS SUBSTANCE which should be handled by trained staff only.

---

Storage: -20 °C

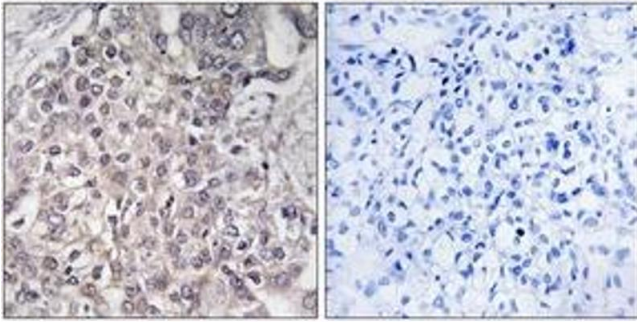
---

Storage Comment: Stable at -20°C for at least 1 year.

---

Expiry Date: 12 months

---



### Immunohistochemistry

**Image 1.** Immunohistochemistry analysis of paraffin-embedded human liver carcinoma, using Cytochrome P450 4F2 Antibody. The picture on the right is treated with the synthesized peptide.