

Datasheet for ABIN1534400
anti-CYP4X1 antibody (AA 251-300)[Go to Product page](#)

2 Images

Overview

Quantity:	100 µg
Target:	CYP4X1
Binding Specificity:	AA 251-300
Reactivity:	Human
Host:	Rabbit
Clonality:	Polyclonal
Conjugate:	This CYP4X1 antibody is un-conjugated
Application:	Western Blotting (WB), ELISA, Immunohistochemistry (IHC)

Product Details

Immunogen:	The antiserum was produced against synthesized peptide derived from human Cytochrome P450 4X1.
Isotype:	IgG
Specificity:	Cytochrome P450 4X1 Antibody detects endogenous levels of total Cytochrome P450 4X1 protein.
Purification:	The antibody was purified from rabbit antiserum by affinity-chromatography using immunogen.
Purity:	> 95 %

Target Details

Target:	CYP4X1
---------	--------

Target Details

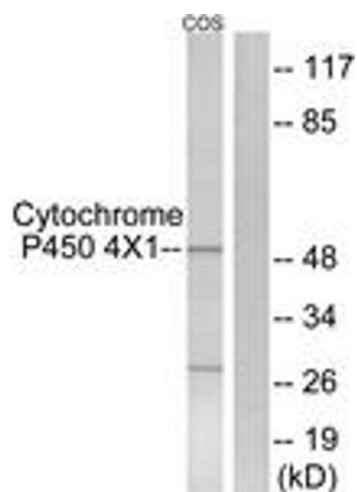
Alternative Name:	Cytochrome P450 4X1 (CYP4X1 Products)
Background:	Synonyms: Cytochrome P450 4X1, CYPIVX1, CYP4X1, CP4X1 NCBI Gene Symbol: CYP4X1
Molecular Weight:	58 kDa
Gene ID:	260293
UniProt:	Q8N118
Pathways:	Regulation of Lipid Metabolism by PPARalpha

Application Details

Application Notes:	WB: 1:500~1:1000 IHC: 1:50~1:100 ELISA: 1:40000
Comment:	Unigene-Number: Hs.439760 (NCBI Gene Symbol: CYP4X1)
Restrictions:	For Research Use only

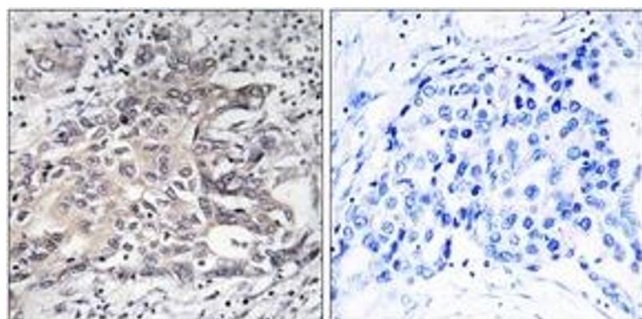
Handling

Format:	Liquid
Concentration:	1 mg/mL
Buffer:	phosphate buffered saline (without Mg ²⁺ and Ca ²⁺), pH 7.4, 150 mM NaCl, 0.02 % sodium azide and 50 % glycerol.
Preservative:	Sodium azide
Precaution of Use:	This product contains sodium azide: a POISONOUS AND HAZARDOUS SUBSTANCE which should be handled by trained staff only.
Storage:	-20 °C
Storage Comment:	Stable at -20°C for at least 1 year.
Expiry Date:	12 months



Western Blotting

Image 1. Western blot analysis of extracts from COS7 cells, using Cytochrome P450 4X1 Antibody. The lane on the right is treated with the synthesized peptide.



Immunohistochemistry

Image 2. Immunohistochemistry analysis of paraffin-embedded human liver carcinoma tissue, using Cytochrome P450 4X1 Antibody. The picture on the right is treated with the synthesized peptide.