



[Go to Product page](#)

Datasheet for ABIN1534407
anti-FGF22 antibody (AA 71-120)

3 Images

Overview

Quantity:	100 µL
Target:	FGF22
Binding Specificity:	AA 71-120
Reactivity:	Human, Mouse, Rat
Host:	Rabbit
Clonality:	Polyclonal
Conjugate:	This FGF22 antibody is un-conjugated
Application:	Western Blotting (WB), ELISA, Immunohistochemistry (IHC), Immunofluorescence (IF)

Product Details

Immunogen:	The antiserum was produced against synthesized peptide derived from human FGF22.
Isotype:	IgG
Specificity:	FGF22 Antibody detects endogenous levels of total FGF22 protein.
Purification:	The antibody was purified from rabbit antiserum by affinity-chromatography using immunogen.
Purity:	> 95 %

Target Details

Target:	FGF22
Alternative Name:	FGF22 (FGF22 Products)
Background:	Synonyms: Fibroblast growth factor 22, FGF-22,

Target Details

NCBI Gene Symbol: FGF22

Molecular Weight: 19 kDa

Gene ID: 27006

OMIM: 605831

UniProt: [Q9HCT0](#)

Pathways: [RTK Signaling](#), [Fc-epsilon Receptor Signaling Pathway](#), [EGFR Signaling Pathway](#), [Neurotrophin Signaling Pathway](#)

Application Details

Application Notes: WB: 1:500~1:1000 IHC: 1:50~1:100 IF: 1:100~1:500 ELISA: 1:60000

Comment: Unigene-Number: Hs.248087 (NCBI Gene Symbol: FGF22)

Restrictions: For Research Use only

Handling

Format: Liquid

Concentration: 1 mg/mL

Buffer: phosphate buffered saline (without Mg²⁺ and Ca²⁺), pH 7.4, 150 mM NaCl, 0.02 % sodium azide and 50 % glycerol.

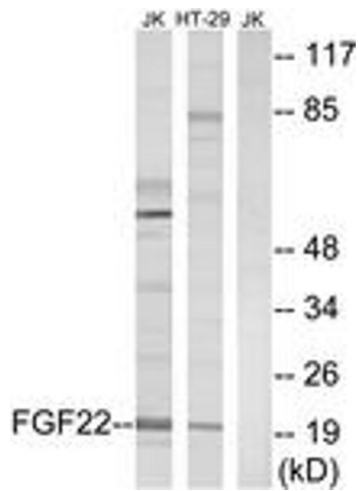
Preservative: Sodium azide

Precaution of Use: This product contains sodium azide: a POISONOUS AND HAZARDOUS SUBSTANCE which should be handled by trained staff only.

Storage: -20 °C

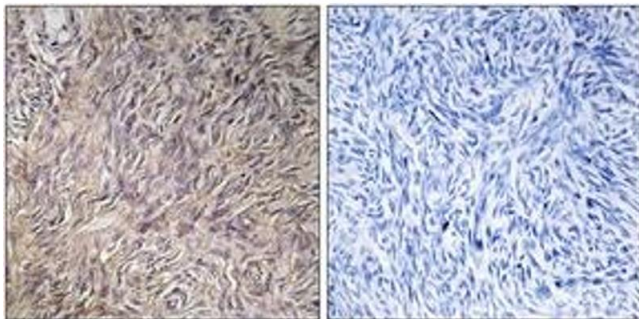
Storage Comment: Stable at -20°C for at least 1 year.

Expiry Date: 12 months



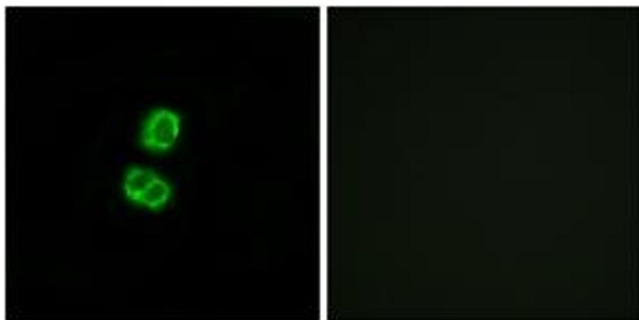
Western Blotting

Image 1. Western blot analysis of extracts from Jurkat/HT-29 cells, using FGF22 Antibody. The lane on the right is treated with the synthesized peptide.



Immunohistochemistry

Image 2. Immunohistochemistry analysis of paraffin-embedded human ovary tissue, using FGF22 Antibody. The picture on the right is treated with the synthesized peptide.



Immunofluorescence

Image 3. Immunofluorescence analysis of MCF7 cells, using FGF22 Antibody. The picture on the right is treated with the synthesized peptide.