

Datasheet for ABIN1534412
anti-GRID1 antibody (AA 831-880)[Go to Product page](#)

2 Images

Overview

Quantity:	100 µg
Target:	GRID1
Binding Specificity:	AA 831-880
Reactivity:	Human, Mouse, Rat
Host:	Rabbit
Clonality:	Polyclonal
Conjugate:	This GRID1 antibody is un-conjugated
Application:	Western Blotting (WB), ELISA, Immunohistochemistry (IHC)

Product Details

Immunogen:	The antiserum was produced against synthesized peptide derived from human GRID1.
Isotype:	IgG
Specificity:	GRID1 Antibody detects endogenous levels of total GRID1 protein.
Purification:	The antibody was purified from rabbit antiserum by affinity-chromatography using immunogen.
Purity:	> 95 %

Target Details

Target:	GRID1
Alternative Name:	GRID1 (GRID1 Products)
Background:	Synonyms: GRID1, GluR delta-1, glutamate receptor delta-1 subunit,

Target Details

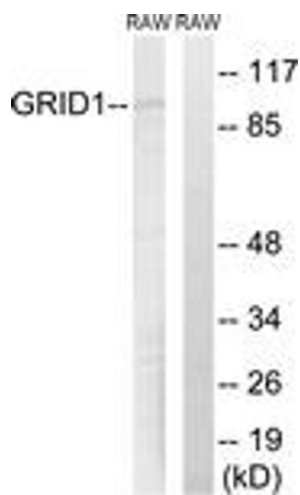
	NCBI Gene Symbol: GRID1
Molecular Weight:	112 kDa
Gene ID:	2894
OMIM:	610659
UniProt:	Q9ULK0

Application Details

Application Notes:	WB: 1:500~1:1000 IHC: 1:50~1:100 ELISA: 1:40000
Comment:	Unigene-Number: Hs.530653 (NCBI Gene Symbol: GRID1)
Restrictions:	For Research Use only

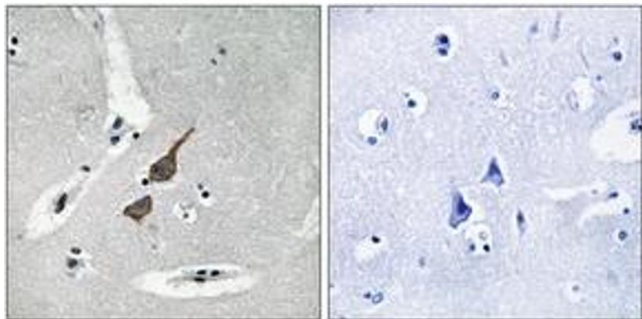
Handling

Format:	Liquid
Concentration:	1 mg/mL
Buffer:	phosphate buffered saline (without Mg ²⁺ and Ca ²⁺), pH 7.4, 150 mM NaCl, 0.02 % sodium azide and 50 % glycerol.
Preservative:	Sodium azide
Precaution of Use:	This product contains sodium azide: a POISONOUS AND HAZARDOUS SUBSTANCE which should be handled by trained staff only.
Storage:	-20 °C
Storage Comment:	Stable at -20°C for at least 1 year.
Expiry Date:	12 months



Western Blotting

Image 1. Western blot analysis of extracts from RAW264.7 cells, using GRID1 Antibody. The lane on the right is treated with the synthesized peptide.



Immunohistochemistry

Image 2. Immunohistochemistry analysis of paraffin-embedded human brain tissue, using GRID1 Antibody. The picture on the right is treated with the synthesized peptide.