



[Go to Product page](#)

Datasheet for ABIN1534414  
**anti-GSPT1 antibody (AA 101-150)**

1 Image

### Overview

Quantity:	100 µg
Target:	GSPT1
Binding Specificity:	AA 101-150
Reactivity:	Human, Mouse, Rat
Host:	Rabbit
Clonality:	Polyclonal
Conjugate:	This GSPT1 antibody is un-conjugated
Application:	ELISA, Immunohistochemistry (IHC)

### Product Details

Immunogen:	The antiserum was produced against synthesized peptide derived from human GSPT1.
Isotype:	IgG
Specificity:	GSPT1 Antibody detects endogenous levels of total GSPT1 protein.
Purification:	The antibody was purified from rabbit antiserum by affinity-chromatography using immunogen.
Purity:	> 95 %

### Target Details

Target:	GSPT1
Alternative Name:	GSPT1 ( <a href="#">GSPT1 Products</a> )
Background:	Synonyms: G1 to S phase transition protein 1 homolog, GTP-binding protein GST1-HS, GSPT1

## Target Details

---

NCBI Gene Symbol: GSPT1

Molecular Weight: 55 kDa

Gene ID: 2935

OMIM: 139259

UniProt: [P15170](#)

## Application Details

---

Application Notes: IHC: 1:50~1:100 ELISA: 1:40000

Comment: Unigene-Number: Hs.528780 (NCBI Gene Symbol: GSPT1)

Restrictions: For Research Use only

## Handling

---

Format: Liquid

Concentration: 1 mg/mL

Buffer: phosphate buffered saline (without Mg<sup>2+</sup> and Ca<sup>2+</sup>), pH 7.4, 150 mM NaCl, 0.02 % sodium azide and 50 % glycerol.

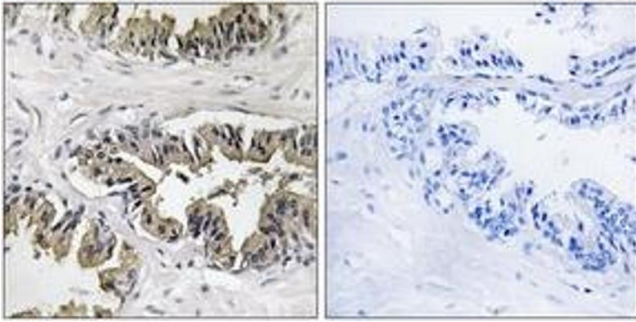
Preservative: Sodium azide

Precaution of Use: This product contains sodium azide: a POISONOUS AND HAZARDOUS SUBSTANCE which should be handled by trained staff only.

Storage: -20 °C

Storage Comment: Stable at -20°C for at least 1 year.

Expiry Date: 12 months



### Immunohistochemistry

**Image 1.** Immunohistochemistry analysis of paraffin-embedded human prostate carcinoma tissue, using GSPT1 Antibody. The picture on the right is treated with the synthesized peptide.