

Datasheet for ABIN1534419
anti-IFITM3 antibody (AA 1-50)



[Go to Product page](#)

2 Images

Overview

Quantity:	100 µL
Target:	IFITM3
Binding Specificity:	AA 1-50
Reactivity:	Human
Host:	Rabbit
Clonality:	Polyclonal
Conjugate:	This IFITM3 antibody is un-conjugated
Application:	Western Blotting (WB), ELISA, Immunofluorescence (IF)

Product Details

Immunogen:	The antiserum was produced against synthesized peptide derived from human IFM3.
Isotype:	IgG
Specificity:	IFM3 Antibody detects endogenous levels of total IFM3 protein.
Purification:	The antibody was purified from rabbit antiserum by affinity-chromatography using immunogen.
Purity:	> 95 %

Target Details

Target:	IFITM3
Alternative Name:	IFM3 (IFITM3 Products)
Background:	Synonyms: IFM3, interferon-induced transmembrane protein 3, interferon-inducible protein 1-8U

Target Details

NCBI Gene Symbol: IFITM3

Molecular Weight: 14 kDa

Gene ID: 10410

OMIM: 605579

UniProt: [Q01628](#)

Application Details

Application Notes: WB: 1:500~1:1000 IF: 1:100~1:500 ELISA: 1:40000

Comment: Unigene-Number: Hs.374650 (NCBI Gene Symbol: IFITM3)

Restrictions: For Research Use only

Handling

Format: Liquid

Concentration: 1 mg/mL

Buffer: phosphate buffered saline (without Mg²⁺ and Ca²⁺), pH 7.4, 150 mM NaCl, 0.02 % sodium azide and 50 % glycerol.

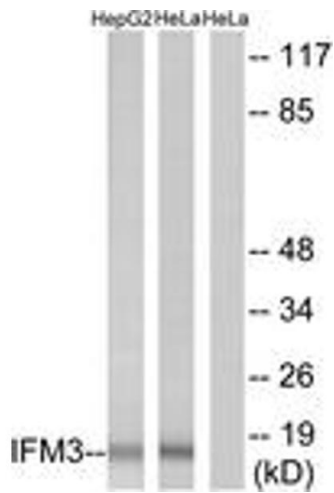
Preservative: Sodium azide

Precaution of Use: This product contains sodium azide: a POISONOUS AND HAZARDOUS SUBSTANCE which should be handled by trained staff only.

Storage: -20 °C

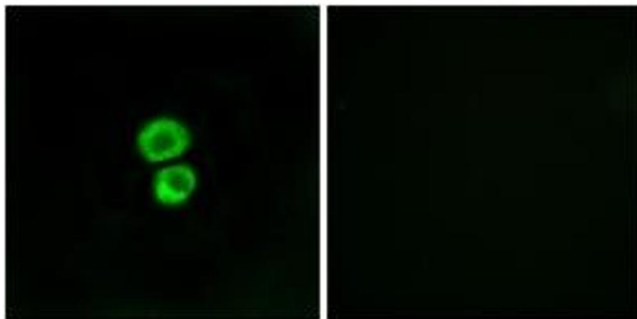
Storage Comment: Stable at -20°C for at least 1 year.

Expiry Date: 12 months



Western Blotting

Image 1. Western blot analysis of extracts from HepG2/HeLa cells, using IFM3 Antibody. The lane on the right is treated with the synthesized peptide.



Immunofluorescence

Image 2. Immunofluorescence analysis of MCF7 cells, using IFM3 Antibody. The picture on the right is treated with the synthesized peptide.