

Datasheet for ABIN1534431
anti-CIDEB antibody (AA 91-140)

3 Images

[Go to Product page](#)

Overview

Quantity:	100 µg
Target:	CIDEB
Binding Specificity:	AA 91-140
Reactivity:	Human, Mouse
Host:	Rabbit
Clonality:	Polyclonal
Conjugate:	This CIDEB antibody is un-conjugated
Application:	ELISA, Western Blotting (WB), Immunohistochemistry (IHC), Immunofluorescence (IF)

Product Details

Immunogen:	The antiserum was produced against synthesized peptide derived from human CIDEB.
Isotype:	IgG
Specificity:	CIDEB Antibody detects endogenous levels of total CIDEB protein.
Purification:	The antibody was purified from rabbit antiserum by affinity-chromatography using immunogen.
Purity:	> 95 %

Target Details

Target:	CIDEB
Alternative Name:	CIDEB (CIDEB Products)
Background:	Synonyms: Cell death activator CIDE-B, Cell death-inducing DFFA-like effector B,

Target Details

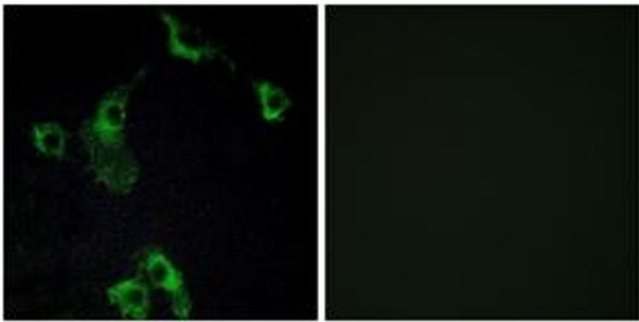
	NCBI Gene Symbol: CIDEB
Molecular Weight:	24 kDa
Gene ID:	27141
OMIM:	604441
UniProt:	Q9UHD4

Application Details

Application Notes:	WB: 1:500~1:1000 IHC: 1:50~1:100 IF: 1:100~1:500 ELISA: 1:40000
Comment:	Unigene-Number: Hs.642693 (NCBI Gene Symbol: CIDEB)
Restrictions:	For Research Use only

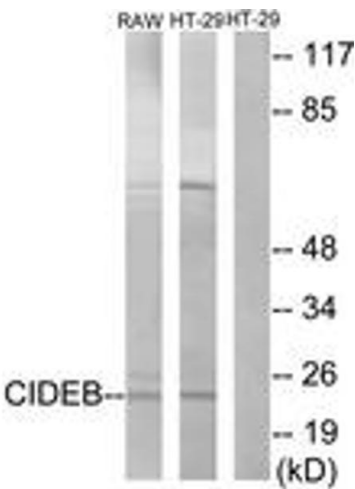
Handling

Format:	Liquid
Concentration:	1 mg/mL
Buffer:	phosphate buffered saline (without Mg ²⁺ and Ca ²⁺), pH 7.4, 150 mM NaCl, 0.02 % sodium azide and 50 % glycerol.
Preservative:	Sodium azide
Precaution of Use:	This product contains sodium azide: a POISONOUS AND HAZARDOUS SUBSTANCE which should be handled by trained staff only.
Storage:	-20 °C
Storage Comment:	Stable at -20°C for at least 1 year.
Expiry Date:	12 months



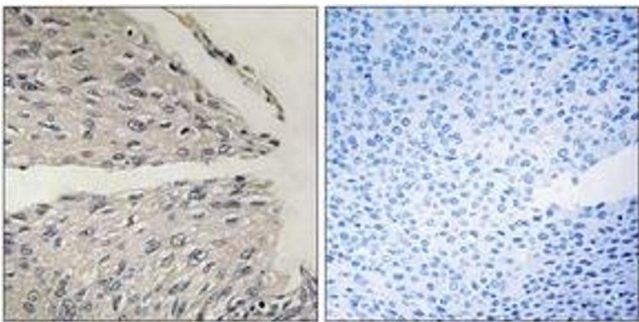
Immunofluorescence

Image 1. Immunofluorescence analysis of COS7 cells, using CIDEB Antibody. The picture on the right is treated with the synthesized peptide.



Western Blotting

Image 2. Western blot analysis of extracts from HT-29/RAW264.7 cells, using CIDEB Antibody. The lane on the right is treated with the synthesized peptide.



Immunohistochemistry

Image 3. Immunohistochemistry analysis of paraffin-embedded human cervix caecinoma tissue, using CIDEB Antibody. The picture on the right is treated with the synthesized peptide.