

Datasheet for ABIN1534433

anti-Cytochrome b5 (CYTB5) (AA 61-110) antibody[Go to Product page](#)**2** Images

Overview

Quantity:	100 µg
Target:	Cytochrome b5 (CYTB5)
Binding Specificity:	AA 61-110
Reactivity:	Human, Mouse, Rat
Host:	Rabbit
Clonality:	Polyclonal
Conjugate:	Un-conjugated
Application:	ELISA, Western Blotting (WB), Immunofluorescence (IF)

Product Details

Immunogen:	The antiserum was produced against synthesized peptide derived from human CYB5.
Isotype:	IgG
Specificity:	CYB5 Antibody detects endogenous levels of total CYB5 protein.
Purification:	The antibody was purified from rabbit antiserum by affinity-chromatography using immunogen.
Purity:	> 95 %

Target Details

Target:	Cytochrome b5 (CYTB5)
Alternative Name:	CYB5 (CYTB5 Products)
Background:	Synonyms: Cytochrome b5, cyb5a

Target Details

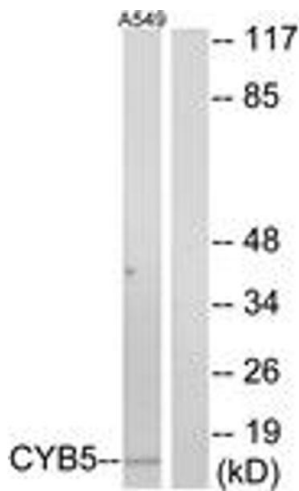
	NCBI Gene Symbol: CYB5A
Molecular Weight:	15 kDa
Gene ID:	1528
OMIM:	613218
UniProt:	P00167

Application Details

Application Notes:	WB: 1:500~1:1000 IF: 1:100~1:500 ELISA: 1:5000
Comment:	Unigene-Number: Hs.465413 (NCBI Gene Symbol: CYB5A)
Restrictions:	For Research Use only

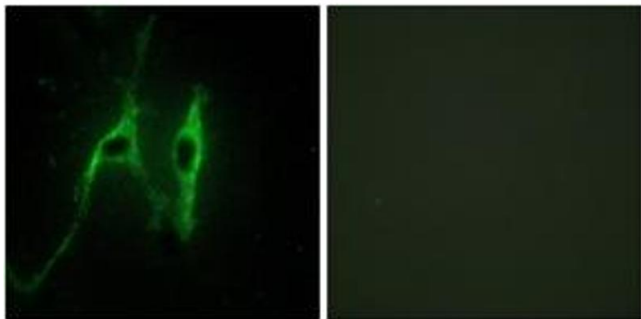
Handling

Format:	Liquid
Concentration:	1 mg/mL
Buffer:	phosphate buffered saline (without Mg ²⁺ and Ca ²⁺), pH 7.4, 150 mM NaCl, 0.02 % sodium azide and 50 % glycerol.
Preservative:	Sodium azide
Precaution of Use:	This product contains sodium azide: a POISONOUS AND HAZARDOUS SUBSTANCE which should be handled by trained staff only.
Storage:	-20 °C
Storage Comment:	Stable at -20°C for at least 1 year.
Expiry Date:	12 months



Western Blotting

Image 1. Western blot analysis of extracts from A549 cells, using CYB5 Antibody. The lane on the right is treated with the synthesized peptide.



Immunofluorescence

Image 2. Immunofluorescence analysis of NIH-3T3 cells, using CYB5 Antibody. The picture on the right is treated with the synthesized peptide.