

Datasheet for ABIN1534443

anti-Exonuclease 1 antibody (AA 61-110)**2** Images[Go to Product page](#)

Overview

Quantity:	100 µL
Target:	Exonuclease 1 (EXO1)
Binding Specificity:	AA 61-110
Reactivity:	Human, Mouse
Host:	Rabbit
Clonality:	Polyclonal
Conjugate:	This Exonuclease 1 antibody is un-conjugated
Application:	Western Blotting (WB), ELISA, Immunofluorescence (IF)

Product Details

Immunogen:	The antiserum was produced against synthesized peptide derived from human EXO1.
Isotype:	IgG
Specificity:	EXO1 Antibody detects endogenous levels of total EXO1 protein.
Purification:	The antibody was purified from rabbit antiserum by affinity-chromatography using immunogen.
Purity:	> 95 %

Target Details

Target:	Exonuclease 1 (EXO1)
Alternative Name:	EXO1 (EXO1 Products)
Background:	Synonyms: Exonuclease 1, hExo1, Exonuclease I, hExoI , EXO1 , EXOI, HEX1

Target Details

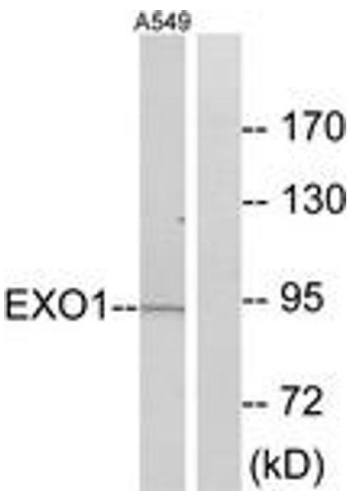
	NCBI Gene Symbol: EXO1
Molecular Weight:	94 kDa
Gene ID:	9156
OMIM:	606063
UniProt:	Q9UQ84
Pathways:	DNA Damage Repair , Production of Molecular Mediator of Immune Response

Application Details

Application Notes:	WB: 1:500~1:1000 IF: 1:100~1:500 ELISA: 1:10000
Comment:	Unigene-Number: Hs.498248 (NCBI Gene Symbol: EXO1)
Restrictions:	For Research Use only

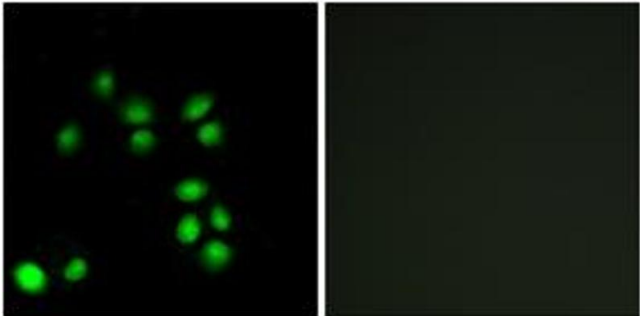
Handling

Format:	Liquid
Concentration:	1 mg/mL
Buffer:	phosphate buffered saline (without Mg2+ and Ca2+), pH 7.4, 150 mM NaCl, 0.02 % sodium azide and 50 % glycerol.
Preservative:	Sodium azide
Precaution of Use:	This product contains sodium azide: a POISONOUS AND HAZARDOUS SUBSTANCE which should be handled by trained staff only.
Storage:	-20 °C
Storage Comment:	Stable at -20°C for at least 1 year.
Expiry Date:	12 months



Western Blotting

Image 1. Western blot analysis of extracts from A549 cells, using EXO1 Antibody. The lane on the right is treated with the synthesized peptide.



Immunofluorescence

Image 2. Immunofluorescence analysis of A549 cells, using EXO1 Antibody. The picture on the right is treated with the synthesized peptide.