

Datasheet for ABIN1534447  
**anti-GZMH antibody (AA 51-100)**[Go to Product page](#)

## 2 Images

## Overview

Quantity:	100 µg
Target:	GZMH
Binding Specificity:	AA 51-100
Reactivity:	Human
Host:	Rabbit
Clonality:	Polyclonal
Conjugate:	This GZMH antibody is un-conjugated
Application:	Western Blotting (WB), ELISA, Immunofluorescence (IF)

## Product Details

Immunogen:	The antiserum was produced against synthesized peptide derived from human GRAH.
Isotype:	IgG
Specificity:	GRAH Antibody detects endogenous levels of total GRAH protein.
Purification:	The antibody was purified from rabbit antiserum by affinity-chromatography using immunogen.
Purity:	> 95 %

## Target Details

Target:	GZMH
Abstract:	<a href="#">GZMH Products</a>
Background:	Synonyms: Granzyme H, Cytotoxic T-lymphocyte proteinase, Cathepsin G-like 2, CTSG2, CCP-

## Target Details

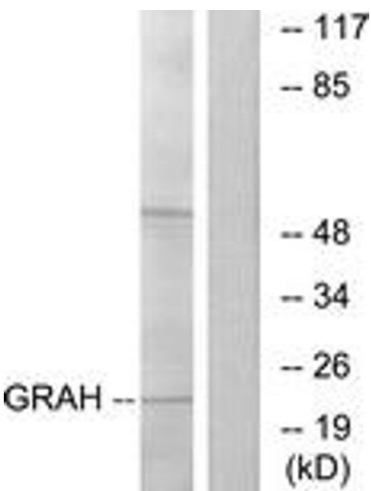
	X, Cytotoxic serine protease C, CSP-C, GZMH, CGL2, CTSG L2 NCBI Gene Symbol: GZMH
Molecular Weight:	27 kDa
Gene ID:	2999
OMIM:	116831
UniProt:	<a href="#">P20718</a>

## Application Details

Application Notes:	WB: 1:500~1:1000 IF: 1:100~1:500 ELISA: 1:5000
Comment:	Unigene-Number: Hs.348264 (NCBI Gene Symbol: GZMH)
Restrictions:	For Research Use only

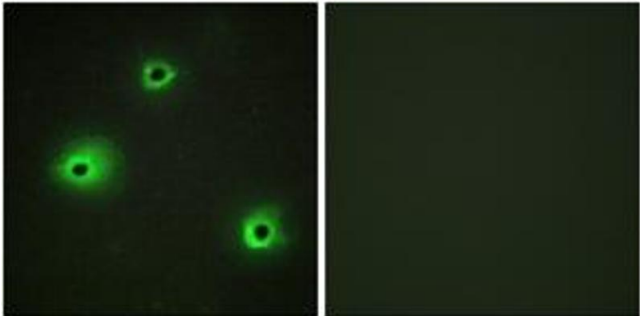
## Handling

Format:	Liquid
Concentration:	1 mg/mL
Buffer:	phosphate buffered saline (without Mg <sup>2+</sup> and Ca <sup>2+</sup> ), pH 7.4, 150 mM NaCl, 0.02 % sodium azide and 50 % glycerol.
Preservative:	Sodium azide
Precaution of Use:	This product contains sodium azide: a POISONOUS AND HAZARDOUS SUBSTANCE which should be handled by trained staff only.
Storage:	-20 °C
Storage Comment:	Stable at -20°C for at least 1 year.
Expiry Date:	12 months



### Western Blotting

**Image 1.** Western blot analysis of extracts from K562 cells, using GRAH Antibody. The lane on the right is treated with the synthesized peptide.



### Immunofluorescence

**Image 2.** Immunofluorescence analysis of A549 cells, using GRAH Antibody. The picture on the right is treated with the synthesized peptide.