



[Go to Product page](#)

Datasheet for ABIN1534452

anti-Laminin antibody (AA 2011-2060)

2 Images

Overview

Quantity:	100 µg
Target:	Laminin (LAMA2)
Binding Specificity:	AA 2011-2060
Reactivity:	Human, Mouse
Host:	Rabbit
Clonality:	Polyclonal
Conjugate:	This Laminin antibody is un-conjugated
Application:	ELISA, Immunohistochemistry (IHC), Immunofluorescence (IF)

Product Details

Immunogen:	The antiserum was produced against synthesized peptide derived from human LAMA2.
Isotype:	IgG
Specificity:	LAMA2 Antibody detects endogenous levels of total LAMA2 protein.
Purification:	The antibody was purified from rabbit antiserum by affinity-chromatography using immunogen.
Purity:	> 95 %

Target Details

Target:	Laminin (LAMA2)
Alternative Name:	LAMA2 (LAMA2 Products)
Background:	Synonyms: Laminin subunit alpha-2, Laminin M chain, Merosin heavy chain, LAMA2, LAMM

Target Details

NCBI Gene Symbol: LAMA2

Molecular Weight: 342 kDa

Gene ID: 3908

OMIM: 156225

UniProt: [P24043](#)

Application Details

Application Notes: IHC: 1:50~1:100 IF: 1:100~1:500 ELISA: 1:20000

Comment: Unigene-Number: Hs.200841 (NCBI Gene Symbol: LAMA2)

Restrictions: For Research Use only

Handling

Format: Liquid

Concentration: 1 mg/mL

Buffer: phosphate buffered saline (without Mg²⁺ and Ca²⁺), pH 7.4, 150 mM NaCl, 0.02 % sodium azide and 50 % glycerol.

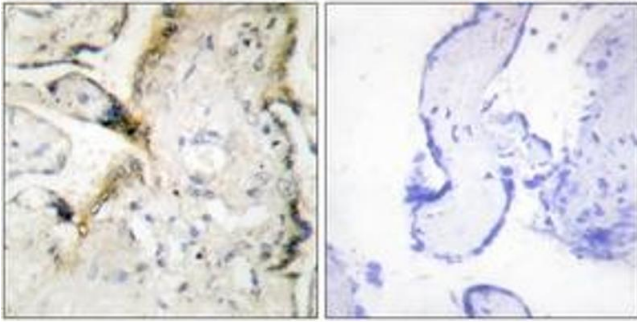
Preservative: Sodium azide

Precaution of Use: This product contains sodium azide: a POISONOUS AND HAZARDOUS SUBSTANCE which should be handled by trained staff only.

Storage: -20 °C

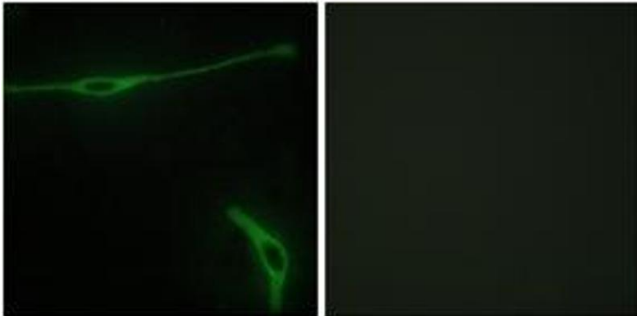
Storage Comment: Stable at -20°C for at least 1 year.

Expiry Date: 12 months



Immunohistochemistry

Image 1. Immunohistochemistry analysis of paraffin-embedded human placenta tissue, using LAMA2 Antibody. The picture on the right is treated with the synthesized peptide.



Immunofluorescence

Image 2. Immunofluorescence analysis of NIH-3T3 cells, using LAMA2 Antibody. The picture on the right is treated with the synthesized peptide.