

Datasheet for ABIN1534454
anti-LAMa4 antibody (AA 481-530)

3 Images

[Go to Product page](#)

Overview

Quantity:	100 µg
Target:	LAMa4
Binding Specificity:	AA 481-530
Reactivity:	Human, Mouse
Host:	Rabbit
Clonality:	Polyclonal
Conjugate:	This LAMa4 antibody is un-conjugated
Application:	Western Blotting (WB), Immunohistochemistry (IHC), ELISA, Immunofluorescence (IF)

Product Details

Immunogen:	The antiserum was produced against synthesized peptide derived from human LAMA4.
Isotype:	IgG
Specificity:	LAMA4 Antibody detects endogenous levels of total LAMA4 protein.
Purification:	The antibody was purified from rabbit antiserum by affinity-chromatography using immunogen.
Purity:	> 95 %

Target Details

Target:	LAMa4
Alternative Name:	LAMA4 (LAMa4 Products)
Background:	Synonyms: Laminin subunit alpha-4, LAMA4

Target Details

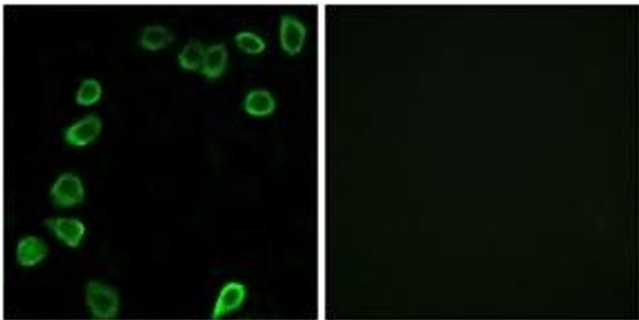
	NCBI Gene Symbol: LAMA4
Molecular Weight:	202 kDa
Gene ID:	3910
OMIM:	600133
UniProt:	Q16363
Pathways:	Brown Fat Cell Differentiation

Application Details

Application Notes:	WB: 1:500~1:1000 IHC: 1:50~1:100 IF: 1:100~1:500 ELISA: 1:40000
Comment:	Unigene-Number: Hs.654572 (NCBI Gene Symbol: LAMA4)
Restrictions:	For Research Use only

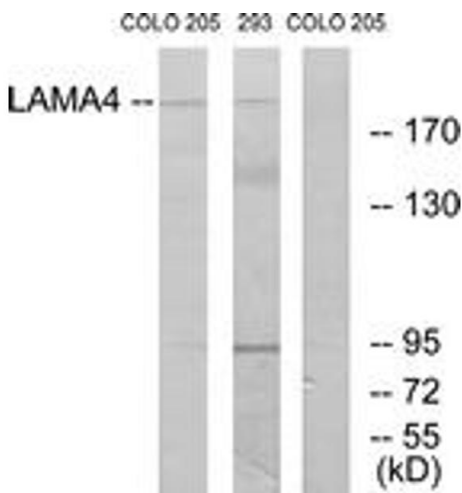
Handling

Format:	Liquid
Concentration:	1 mg/mL
Buffer:	phosphate buffered saline (without Mg ²⁺ and Ca ²⁺), pH 7.4, 150 mM NaCl, 0.02 % sodium azide and 50 % glycerol.
Preservative:	Sodium azide
Precaution of Use:	This product contains sodium azide: a POISONOUS AND HAZARDOUS SUBSTANCE which should be handled by trained staff only.
Storage:	-20 °C
Storage Comment:	Stable at -20°C for at least 1 year.
Expiry Date:	12 months



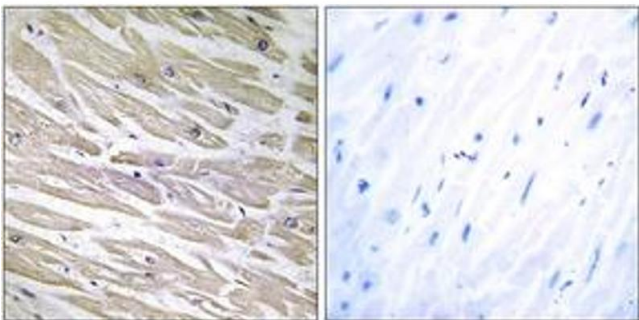
Immunofluorescence

Image 1. Immunofluorescence analysis of NIH-3T3 cells, using LAMA4 Antibody. The picture on the right is treated with the synthesized peptide.



Western Blotting

Image 2. Western blot analysis of extracts from COLO/293 cells, using LAMA4 Antibody. The lane on the right is treated with the synthesized peptide.



Immunohistochemistry

Image 3. Immunohistochemistry analysis of paraffin-embedded human heart tissue, using LAMA4 Antibody. The picture on the right is treated with the synthesized peptide.