

Datasheet for ABIN1534461
anti-LEG2 antibody (AA 31-80)



[Go to Product page](#)

2 Images

Overview

Quantity:	100 µL
Target:	LEG2
Binding Specificity:	AA 31-80
Reactivity:	Human, Mouse, Rat
Host:	Rabbit
Clonality:	Polyclonal
Conjugate:	This LEG2 antibody is un-conjugated
Application:	Immunofluorescence (IF), Immunohistochemistry (IHC), ELISA

Product Details

Immunogen:	The antiserum was produced against synthesized peptide derived from human LEG2.
Isotype:	IgG
Specificity:	LEG2 Antibody detects endogenous levels of total LEG2 protein.
Purification:	The antibody was purified from rabbit antiserum by affinity-chromatography using immunogen.
Purity:	> 95 %

Target Details

Target:	LEG2
Alternative Name:	LEG2
Background:	Synonyms: Galectin-2, Beta-galactoside-binding lectin L-14-II, Lactose-binding lectin 2, S-Lac

Target Details

lectin 2, HL14, LGALS2
NCBI Gene Symbol: LGALS2

Molecular Weight: 14 kDa

Gene ID: 3957

OMIM: 150571

UniProt: [P05162](#)

Application Details

Application Notes: IHC: 1:50~1:100 IF: 1:100~1:500 ELISA: 1:1000

Comment: Unigene-Number: Hs.531776 (NCBI Gene Symbol: LGALS2)

Restrictions: For Research Use only

Handling

Format: Liquid

Concentration: 1 mg/mL

Buffer: phosphate buffered saline (without Mg²⁺ and Ca²⁺), pH 7.4, 150 mM NaCl, 0.02 % sodium azide and 50 % glycerol.

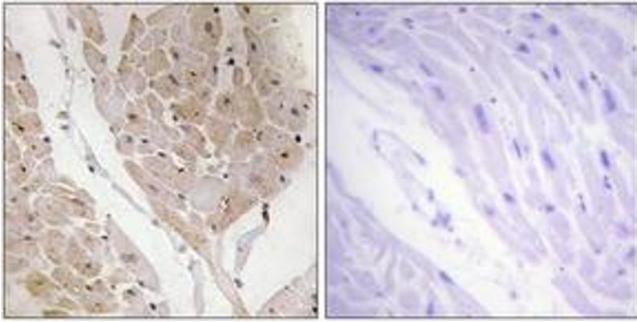
Preservative: Sodium azide

Precaution of Use: This product contains sodium azide: a POISONOUS AND HAZARDOUS SUBSTANCE which should be handled by trained staff only.

Storage: -20 °C

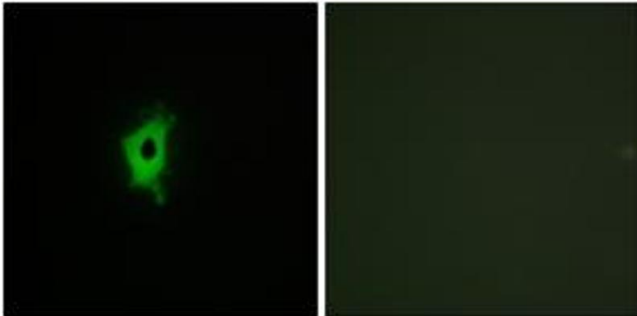
Storage Comment: Stable at -20°C for at least 1 year.

Expiry Date: 12 months



Immunohistochemistry

Image 1. Immunohistochemistry analysis of paraffin-embedded human heart tissue, using LEG2 Antibody. The picture on the right is treated with the synthesized peptide.



Immunofluorescence

Image 2. Immunofluorescence analysis of COS7 cells, using LEG2 Antibody. The picture on the right is treated with the synthesized peptide.