

Datasheet for ABIN1534506
anti-MRPS17 antibody (AA 11-60)[Go to Product page](#)

1 Image

Overview

Quantity:	100 µg
Target:	MRPS17
Binding Specificity:	AA 11-60
Reactivity:	Human, Mouse
Host:	Rabbit
Clonality:	Polyclonal
Conjugate:	This MRPS17 antibody is un-conjugated
Application:	Western Blotting (WB), ELISA

Product Details

Immunogen:	The antiserum was produced against synthesized peptide derived from human MRPS17.
Isotype:	IgG
Specificity:	MRPS17 Antibody detects endogenous levels of total MRPS17 protein.
Purification:	The antibody was purified from rabbit antiserum by affinity-chromatography using immunogen.
Purity:	> 95 %

Target Details

Target:	MRPS17
Alternative Name:	MRPS17 (MRPS17 Products)
Background:	Synonyms: 28S ribosomal protein S17, mitochondrial, S17mt, MRP-S17

Target Details

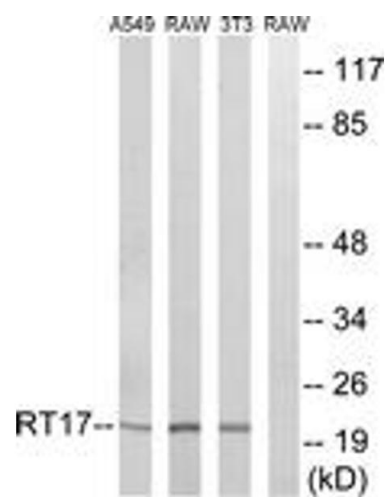
	NCBI Gene Symbol: MRPS17
Molecular Weight:	14 kDa
Gene ID:	51373
OMIM:	611980
UniProt:	Q9Y2R5

Application Details

Application Notes:	WB: 1:500~1:1000 ELISA: 1:40000
Comment:	Unigene-Number: Hs.44298 (NCBI Gene Symbol: MRPS17)
Restrictions:	For Research Use only

Handling

Format:	Liquid
Concentration:	1 mg/mL
Buffer:	phosphate buffered saline (without Mg ²⁺ and Ca ²⁺), pH 7.4, 150 mM NaCl, 0.02 % sodium azide and 50 % glycerol.
Preservative:	Sodium azide
Precaution of Use:	This product contains sodium azide: a POISONOUS AND HAZARDOUS SUBSTANCE which should be handled by trained staff only.
Storage:	-20 °C
Storage Comment:	Stable at -20°C for at least 1 year.
Expiry Date:	12 months



Western Blotting

Image 1. Western blot analysis of extracts from NIH-3T3/RAW264.7/A549 cells, using MRPS17 Antibody. The lane on the right is treated with the synthesized peptide.