

Datasheet for ABIN1534508  
**anti-MRPS18C antibody (AA 71-120)**[Go to Product page](#)

## 3 Images

## Overview

|                      |   |
|----------------------|---|
| Quantity:            | 100 µg  |
| Target:              | MRPS18C   |
| Binding Specificity: | AA 71-120   |
| Reactivity:          | Human, Mouse  |
| Host:                | Rabbit  |
| Clonality:           | Polyclonal  |
| Conjugate:           | This MRPS18C antibody is un-conjugated  |
| Application:         | ELISA, Western Blotting (WB), Immunohistochemistry (IHC), Immunofluorescence (IF) |

## Product Details

|               |   |
|---------------|---|
| Immunogen:    | The antiserum was produced against synthesized peptide derived from human MRPS18C.          |
| Isotype:      | IgG   |
| Specificity:  | MRPS18C Antibody detects endogenous levels of total MRPS18C protein.                        |
| Purification: | The antibody was purified from rabbit antiserum by affinity-chromatography using immunogen. |
| Purity:       | > 95 %  |

## Target Details

|                   |  |
|-------------------|--|
| Target:           | MRPS18C  |
| Alternative Name: | MRPS18C ( <a href="#">MRPS18C Products</a> )                                       |
| Background:       | Synonyms: 28S ribosomal protein S18c, mitochondrial, MRP-S18-c, Mrps18c, MRP-S18-1 |

## Target Details

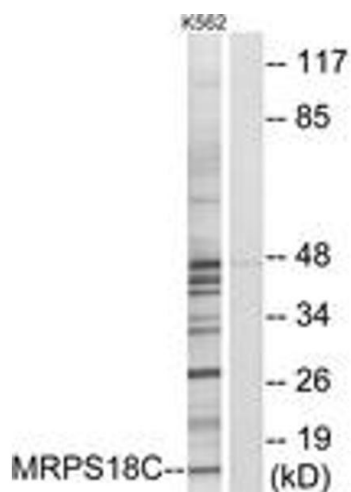
|                   |                           |
|-------------------|---------------------------|
|                   | NCBI Gene Symbol: MRPS18C |
| Molecular Weight: | 15 kDa                    |
| Gene ID:          | 51023                     |
| OMIM:             | 611983                    |
| UniProt:          | <a href="#">Q9Y3D5</a>    |

## Application Details

|                    |  |
|--------------------|--|
| Application Notes: | WB: 1:500~1:1000 IHC: 1:50~1:100 IF: 1:100~1:500 ELISA: 1:40000  |
| Comment:           | Unigene-Number: Hs.334772, Hs.436161 (NCBI Gene Symbol: MRPS18C) |
| Restrictions:      | For Research Use only  |

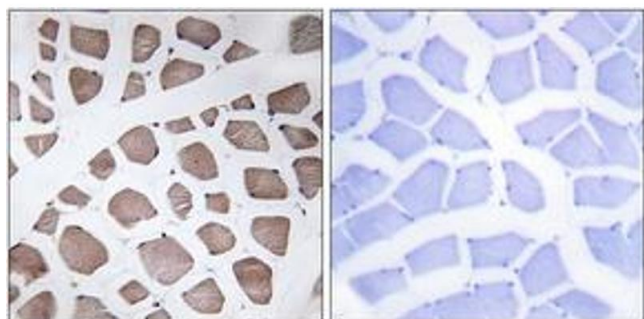
## Handling

|                    |   |
|--------------------|---|
| Format:            | Liquid  |
| Concentration:     | 1 mg/mL   |
| Buffer:            | phosphate buffered saline (without Mg <sup>2+</sup> and Ca <sup>2+</sup> ), pH 7.4, 150 mM NaCl, 0.02 % sodium azide and 50 % glycerol. |
| Preservative:      | Sodium azide  |
| Precaution of Use: | This product contains sodium azide: a POISONOUS AND HAZARDOUS SUBSTANCE which should be handled by trained staff only.                  |
| Storage:           | -20 °C  |
| Storage Comment:   | Stable at -20°C for at least 1 year.  |
| Expiry Date:       | 12 months   |



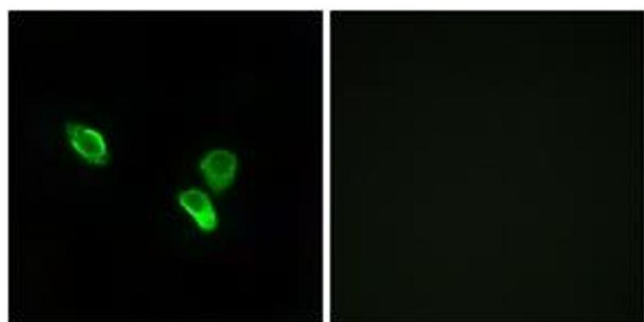
#### Western Blotting

**Image 1.** Western blot analysis of extracts from K562 cells, using MRPS18C Antibody. The lane on the right is treated with the synthesized peptide.



#### Immunohistochemistry

**Image 2.** Immunohistochemistry analysis of paraffin-embedded human skeletal muscle tissue, using MRPS18C Antibody. The picture on the right is treated with the synthesized peptide.



#### Immunofluorescence

**Image 3.** Immunofluorescence analysis of MCF7 cells, using MRPS18C Antibody. The picture on the right is treated with the synthesized peptide.