

Datasheet for ABIN1534509
anti-MRPS24 antibody (AA 51-100)[Go to Product page](#)

1 Image

Overview

Quantity:	100 µg
Target:	MRPS24
Binding Specificity:	AA 51-100
Reactivity:	Human, Mouse, Rat
Host:	Rabbit
Clonality:	Polyclonal
Conjugate:	This MRPS24 antibody is un-conjugated
Application:	ELISA, Immunohistochemistry (IHC)

Product Details

Immunogen:	The antiserum was produced against synthesized peptide derived from human MRPS24.
Isotype:	IgG
Specificity:	MRPS24 Antibody detects endogenous levels of total MRPS24 protein.
Purification:	The antibody was purified from rabbit antiserum by affinity-chromatography using immunogen.
Purity:	> 95 %

Target Details

Target:	MRPS24
Alternative Name:	MRPS24 (MRPS24 Products)
Background:	Synonyms: 28S ribosomal protein S24, mitochondrial, S24mt, MRP-S24, bMRP47, bMRP-47

Target Details

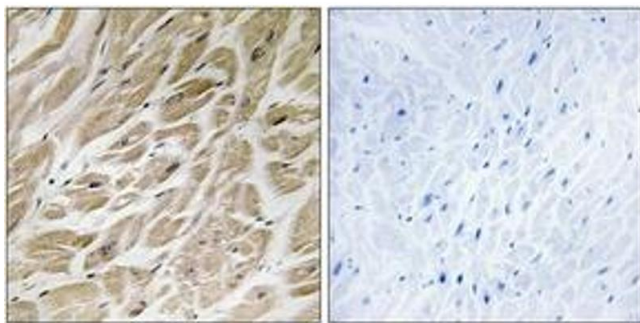
	NCBI Gene Symbol: MRPS24
Molecular Weight:	19 kDa
Gene ID:	64951
OMIM:	611986
UniProt:	Q96EL2

Application Details

Application Notes:	IHC: 1:50~1:100 ELISA: 1:40000
Comment:	Unigene-Number: Hs.284286 (NCBI Gene Symbol: MRPS24)
Restrictions:	For Research Use only

Handling

Format:	Liquid
Concentration:	1 mg/mL
Buffer:	phosphate buffered saline (without Mg ²⁺ and Ca ²⁺), pH 7.4, 150 mM NaCl, 0.02 % sodium azide and 50 % glycerol.
Preservative:	Sodium azide
Precaution of Use:	This product contains sodium azide: a POISONOUS AND HAZARDOUS SUBSTANCE which should be handled by trained staff only.
Storage:	-20 °C
Storage Comment:	Stable at -20°C for at least 1 year.
Expiry Date:	12 months



Immunohistochemistry

Image 1. Immunohistochemistry analysis of paraffin-embedded human heart tissue, using MRPS24 Antibody. The picture on the right is treated with the synthesized peptide.