

Datasheet for ABIN1534516
anti-MRPL11 antibody (AA 21-70)

3 Images

[Go to Product page](#)

Overview

Quantity:	100 µg
Target:	MRPL11
Binding Specificity:	AA 21-70
Reactivity:	Human
Host:	Rabbit
Clonality:	Polyclonal
Conjugate:	This MRPL11 antibody is un-conjugated
Application:	Western Blotting (WB), ELISA, Immunohistochemistry (IHC), Immunofluorescence (IF)

Product Details

Immunogen:	The antiserum was produced against synthesized peptide derived from human MRPL11.
Isotype:	IgG
Specificity:	MRPL11 Antibody detects endogenous levels of total MRPL11 protein.
Purification:	The antibody was purified from rabbit antiserum by affinity-chromatography using immunogen.
Purity:	> 95 %

Target Details

Target:	MRPL11
Alternative Name:	MRPL11 (MRPL11 Products)
Background:	Synonyms: 39S ribosomal protein L11 mitochondrial, L11mt, MRP-L11

Target Details

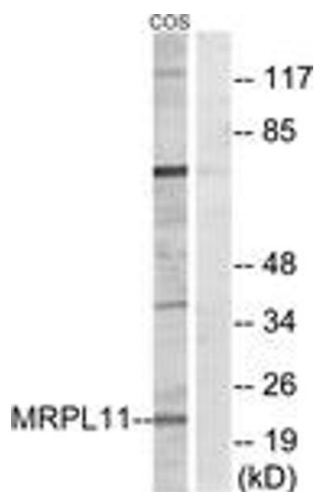
	NCBI Gene Symbol: MRPL11
Molecular Weight:	20 kDa
Gene ID:	65003
OMIM:	611826
UniProt:	Q9Y3B7

Application Details

Application Notes:	WB: 1:500~1:1000 IHC: 1:50~1:100 IF: 1:100~1:500 ELISA: 1:40000
Comment:	Unigene-Number: Hs.418450 (NCBI Gene Symbol: MRPL11)
Restrictions:	For Research Use only

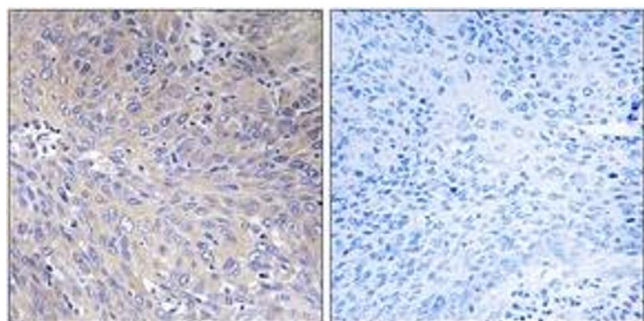
Handling

Format:	Liquid
Concentration:	1 mg/mL
Buffer:	phosphate buffered saline (without Mg ²⁺ and Ca ²⁺), pH 7.4, 150 mM NaCl, 0.02 % sodium azide and 50 % glycerol.
Preservative:	Sodium azide
Precaution of Use:	This product contains sodium azide: a POISONOUS AND HAZARDOUS SUBSTANCE which should be handled by trained staff only.
Storage:	-20 °C
Storage Comment:	Stable at -20°C for at least 1 year.
Expiry Date:	12 months



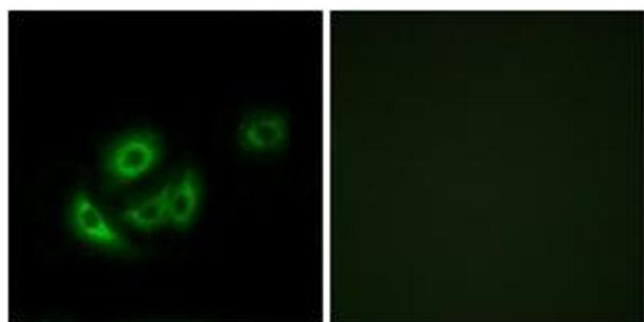
Western Blotting

Image 1. Western blot analysis of extracts from COS cells, using MRPL11 Antibody. The lane on the right is treated with the synthesized peptide.



Immunohistochemistry

Image 2. Immunohistochemistry analysis of paraffin-embedded human cervix carcinoma tissue, using MRPL11 Antibody. The picture on the right is treated with the synthesized peptide.



Immunofluorescence

Image 3. Immunofluorescence analysis of A549 cells, using MRPL11 Antibody. The picture on the right is treated with the synthesized peptide.