

Datasheet for ABIN1534517
anti-MRPL12 antibody (AA 31-80)



[Go to Product page](#)

1 Image

Overview

Quantity:	100 µL
Target:	MRPL12
Binding Specificity:	AA 31-80
Reactivity:	Human, Mouse
Host:	Rabbit
Clonality:	Polyclonal
Conjugate:	This MRPL12 antibody is un-conjugated
Application:	Western Blotting (WB), ELISA

Product Details

Immunogen:	The antiserum was produced against synthesized peptide derived from human MRPL12.
Isotype:	IgG
Specificity:	MRPL12 Antibody detects endogenous levels of total MRPL12 protein.
Purification:	The antibody was purified from rabbit antiserum by affinity-chromatography using immunogen.
Purity:	> 95 %

Target Details

Target:	MRPL12
Alternative Name:	MRPL12 (MRPL12 Products)
Background:	Synonyms: 39S ribosomal protein L12 mitochondrial L12mt, MRP-L12, 5c5-2

Target Details

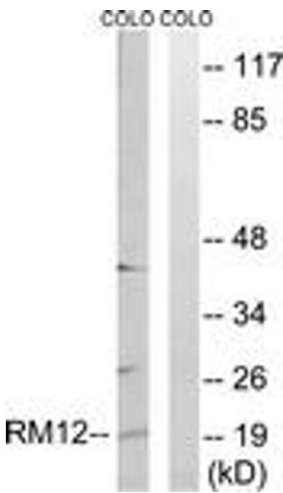
	NCBI Gene Symbol: MRPL12
Molecular Weight:	21 kDa
Gene ID:	6182
OMIM:	602375
UniProt:	P52815

Application Details

Application Notes:	WB: 1:500~1:1000 ELISA: 1:40000
Comment:	Unigene-Number: Hs.109059 (NCBI Gene Symbol: MRPL12)
Restrictions:	For Research Use only

Handling

Format:	Liquid
Concentration:	1 mg/mL
Buffer:	phosphate buffered saline (without Mg ²⁺ and Ca ²⁺), pH 7.4, 150 mM NaCl, 0.02 % sodium azide and 50 % glycerol.
Preservative:	Sodium azide
Precaution of Use:	This product contains sodium azide: a POISONOUS AND HAZARDOUS SUBSTANCE which should be handled by trained staff only.
Storage:	-20 °C
Storage Comment:	Stable at -20°C for at least 1 year.
Expiry Date:	12 months



Western Blotting

Image 1. Western blot analysis of extracts from COLO cells, using MRPL12 Antibody. The lane on the right is treated with the synthesized peptide.