



[Go to Product page](#)

Datasheet for ABIN1534520
anti-MRPL15 antibody (AA 191-240)

1 Image

Overview

Quantity:	100 µg
Target:	MRPL15
Binding Specificity:	AA 191-240
Reactivity:	Human, Mouse
Host:	Rabbit
Clonality:	Polyclonal
Conjugate:	This MRPL15 antibody is un-conjugated
Application:	Western Blotting (WB), ELISA

Product Details

Immunogen:	The antiserum was produced against synthesized peptide derived from human MRPL15.
Isotype:	IgG
Specificity:	MRPL15 Antibody detects endogenous levels of total MRPL15 protein.
Purification:	The antibody was purified from rabbit antiserum by affinity-chromatography using immunogen.
Purity:	> 95 %

Target Details

Target:	MRPL15
Alternative Name:	MRPL15 (MRPL15 Products)
Background:	Synonyms: 39S ribosomal protein L15 mitochondrial, L15mt, MRP-L15

Target Details

NCBI Gene Symbol: MRPL15

Molecular Weight: 33 kDa

Gene ID: 29088

OMIM: 611828

UniProt: [Q9P015](#)

Application Details

Application Notes: WB: 1:500~1:1000 ELISA: 1:40000

Comment: Unigene-Number: Hs.18349 (NCBI Gene Symbol: MRPL15)

Restrictions: For Research Use only

Handling

Format: Liquid

Concentration: 1 mg/mL

Buffer: phosphate buffered saline (without Mg²⁺ and Ca²⁺), pH 7.4, 150 mM NaCl, 0.02 % sodium azide and 50 % glycerol.

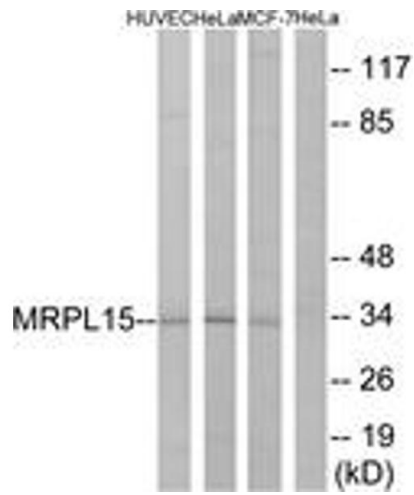
Preservative: Sodium azide

Precaution of Use: This product contains sodium azide: a POISONOUS AND HAZARDOUS SUBSTANCE which should be handled by trained staff only.

Storage: -20 °C

Storage Comment: Stable at -20°C for at least 1 year.

Expiry Date: 12 months



Western Blotting

Image 1. Western blot analysis of extracts from HeLa/HuvEc/MCF-7 cells, using MRPL15 Antibody. The lane on the right is treated with the synthesized peptide.