



[Go to Product page](#)

Datasheet for ABIN1534527
anti-MRPL32 antibody (AA 101-150)

2 Images

Overview

Quantity:	100 µg
Target:	MRPL32
Binding Specificity:	AA 101-150
Reactivity:	Human
Host:	Rabbit
Clonality:	Polyclonal
Conjugate:	This MRPL32 antibody is un-conjugated
Application:	Western Blotting (WB), ELISA, Immunofluorescence (IF)

Product Details

Immunogen:	The antiserum was produced against synthesized peptide derived from human MRPL32.
Isotype:	IgG
Specificity:	MRPL32 Antibody detects endogenous levels of total MRPL32 protein.
Purification:	The antibody was purified from rabbit antiserum by affinity-chromatography using immunogen.
Purity:	> 95 %

Target Details

Target:	MRPL32
Alternative Name:	MRPL32 (MRPL32 Products)
Background:	Synonyms: 39S ribosomal protein L32 mitochondrial, L32mt, MRP-L32

Target Details

NCBI Gene Symbol: MRPL32

Molecular Weight: 21 kDa

Gene ID: 64983

OMIM: 611839

UniProt: [Q9BYC8](#)

Application Details

Application Notes: WB: 1:500~1:1000 IF: 1:100~1:500 ELISA: 1:40000

Comment: Unigene-Number: Hs.50252 (NCBI Gene Symbol: MRPL32)

Restrictions: For Research Use only

Handling

Format: Liquid

Concentration: 1 mg/mL

Buffer: phosphate buffered saline (without Mg²⁺ and Ca²⁺), pH 7.4, 150 mM NaCl, 0.02 % sodium azide and 50 % glycerol.

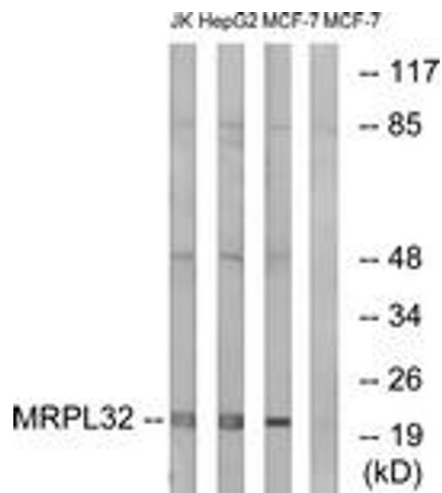
Preservative: Sodium azide

Precaution of Use: This product contains sodium azide: a POISONOUS AND HAZARDOUS SUBSTANCE which should be handled by trained staff only.

Storage: -20 °C

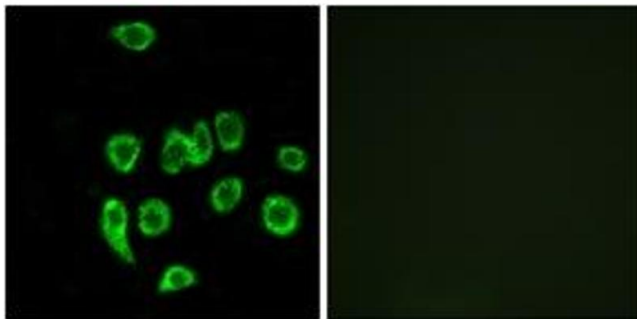
Storage Comment: Stable at -20°C for at least 1 year.

Expiry Date: 12 months



Western Blotting

Image 1. Western blot analysis of extracts from MCF-7/HepG2/Jurkat cells, using MRPL32 Antibody. The lane on the right is treated with the synthesized peptide.



Immunofluorescence

Image 2. Immunofluorescence analysis of A549 cells, using MRPL32 Antibody. The picture on the right is treated with the synthesized peptide.