

Datasheet for ABIN1534530
anti-MRPL41 antibody (AA 81-130)[Go to Product page](#)

2 Images

Overview

Quantity:	100 µg
Target:	MRPL41
Binding Specificity:	AA 81-130
Reactivity:	Human, Mouse, Rat
Host:	Rabbit
Clonality:	Polyclonal
Conjugate:	This MRPL41 antibody is un-conjugated
Application:	Western Blotting (WB), ELISA, Immunohistochemistry (IHC)

Product Details

Immunogen:	The antiserum was produced against synthesized peptide derived from human MRPL41.
Isotype:	IgG
Specificity:	MRPL41 Antibody detects endogenous levels of total MRPL41 protein.
Purification:	The antibody was purified from rabbit antiserum by affinity-chromatography using immunogen.
Purity:	> 95 %

Target Details

Target:	MRPL41
Alternative Name:	MRPL41 (MRPL41 Products)
Background:	Synonyms: 39S ribosomal protein L41 mitochondrial, L41mt, MRP-L41, 39S ribosomal protein

Target Details

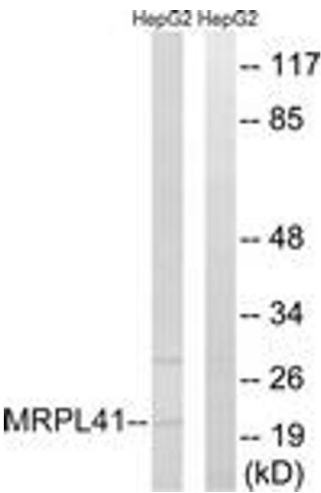
	L27 homolog, MRP-L27 homolog, Bcl-2-interacting mitochondrial ribosomal protein L41, Cell proliferation-inducing gene 3 protein NCBI Gene Symbol: MRPL41
Molecular Weight:	15 kDa
Gene ID:	64975
OMIM:	611846
UniProt:	Q8IXM3
Pathways:	p53 Signaling

Application Details

Application Notes:	WB: 1:500~1:1000 IHC: 1:50~1:100 ELISA: 1:40000
Comment:	Unigene-Number: Hs.44017 (NCBI Gene Symbol: MRPL41)
Restrictions:	For Research Use only

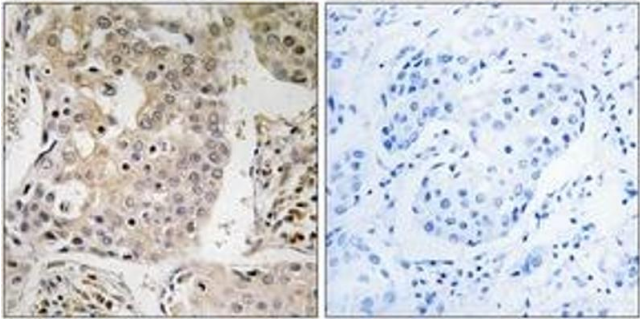
Handling

Format:	Liquid
Concentration:	1 mg/mL
Buffer:	phosphate buffered saline (without Mg ²⁺ and Ca ²⁺), pH 7.4, 150 mM NaCl, 0.02 % sodium azide and 50 % glycerol.
Preservative:	Sodium azide
Precaution of Use:	This product contains sodium azide: a POISONOUS AND HAZARDOUS SUBSTANCE which should be handled by trained staff only.
Storage:	-20 °C
Storage Comment:	Stable at -20°C for at least 1 year.
Expiry Date:	12 months



Western Blotting

Image 1. Western blot analysis of extracts from HepG2 cells, using MRPL41 Antibody. The lane on the right is treated with the synthesized peptide.



Immunohistochemistry

Image 2. Immunohistochemistry analysis of paraffin-embedded human breast carcinoma tissue, using MRPL41 Antibody. The picture on the right is treated with the synthesized peptide.