

Datasheet for ABIN1534531
anti-MRPL44 antibody (AA 221-270)[Go to Product page](#)

3 Images

Overview

Quantity:	100 µg
Target:	MRPL44
Binding Specificity:	AA 221-270
Reactivity:	Human, Rat, Mouse
Host:	Rabbit
Clonality:	Polyclonal
Conjugate:	This MRPL44 antibody is un-conjugated
Application:	Western Blotting (WB), ELISA, Immunohistochemistry (IHC), Immunofluorescence (IF)

Product Details

Immunogen:	The antiserum was produced against synthesized peptide derived from human MRPL44.
Isotype:	IgG
Specificity:	MRPL44 Antibody detects endogenous levels of total MRPL44 protein.
Purification:	The antibody was purified from rabbit antiserum by affinity-chromatography using immunogen.
Purity:	> 95 %

Target Details

Target:	MRPL44
Alternative Name:	MRPL44 (MRPL44 Products)
Background:	Synonyms: 39S ribosomal protein L44 mitochondrial, L44mt, MRP-L44

Target Details

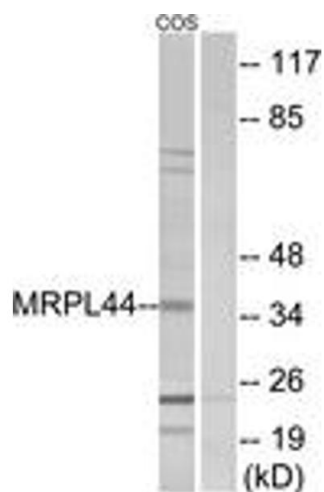
	NCBI Gene Symbol: MRPL44
Molecular Weight:	37 kDa
Gene ID:	65080
OMIM:	611849
UniProt:	Q9H9J2

Application Details

Application Notes:	WB: 1:500~1:1000 IHC: 1:50~1:100 IF: 1:100~1:500 ELISA: 1:40000
Comment:	Unigene-Number: Hs.203559 (NCBI Gene Symbol: MRPL44)
Restrictions:	For Research Use only

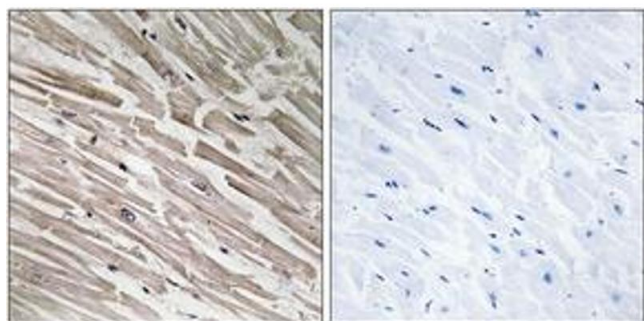
Handling

Format:	Liquid
Concentration:	1 mg/mL
Buffer:	phosphate buffered saline (without Mg ²⁺ and Ca ²⁺), pH 7.4, 150 mM NaCl, 0.02 % sodium azide and 50 % glycerol.
Preservative:	Sodium azide
Precaution of Use:	This product contains sodium azide: a POISONOUS AND HAZARDOUS SUBSTANCE which should be handled by trained staff only.
Storage:	-20 °C
Storage Comment:	Stable at -20°C for at least 1 year.
Expiry Date:	12 months



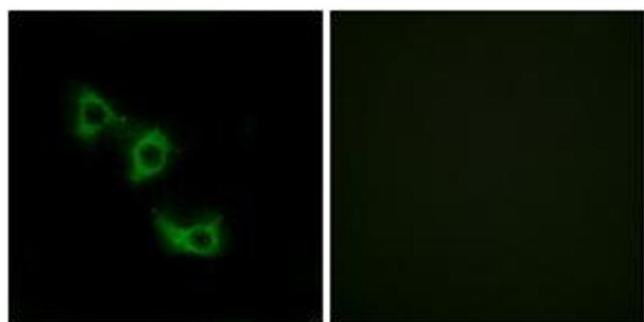
Western Blotting

Image 1. Western blot analysis of extracts from COS7 cells, using MRPL44 Antibody. The lane on the right is treated with the synthesized peptide.



Immunohistochemistry

Image 2. Immunohistochemistry analysis of paraffin-embedded human heart tissue, using MRPL44 Antibody. The picture on the right is treated with the synthesized peptide.



Immunofluorescence

Image 3. Immunofluorescence analysis of HuvEc cells, using MRPL44 Antibody. The picture on the right is treated with the synthesized peptide.