

Datasheet for ABIN1534534
anti-MRPL51 antibody (AA 51-100)[Go to Product page](#)

2 Images

Overview

Quantity:	100 µg
Target:	MRPL51
Binding Specificity:	AA 51-100
Reactivity:	Human, Mouse
Host:	Rabbit
Clonality:	Polyclonal
Conjugate:	This MRPL51 antibody is un-conjugated
Application:	ELISA, Western Blotting (WB), Immunohistochemistry (IHC)

Product Details

Immunogen:	The antiserum was produced against synthesized peptide derived from human MRPL51.
Isotype:	IgG
Specificity:	MRPL51 Antibody detects endogenous levels of total MRPL51 protein.
Purification:	The antibody was purified from rabbit antiserum by affinity-chromatography using immunogen.
Purity:	> 95 %

Target Details

Target:	MRPL51
Alternative Name:	MRPL51 (MRPL51 Products)
Background:	Synonyms: 39S ribosomal protein L51 mitochondrial, L51mt, MRP-L51, bMRP64, bMRP-64

Target Details

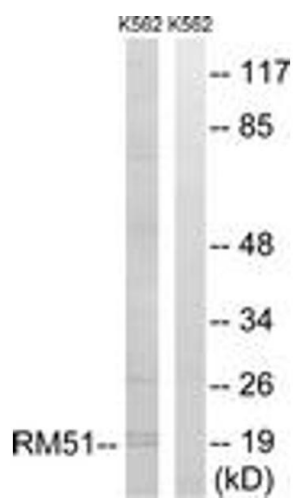
	NCBI Gene Symbol: MRPL51
Molecular Weight:	15 kDa
Gene ID:	51258
OMIM:	611855
UniProt:	Q4U2R6

Application Details

Application Notes:	WB: 1:500~1:1000 IHC: 1:50~1:100 ELISA: 1:20000
Comment:	Unigene-Number: Hs.55847 (NCBI Gene Symbol: MRPL51)
Restrictions:	For Research Use only

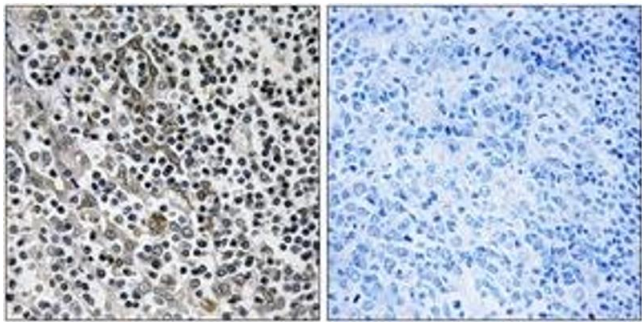
Handling

Format:	Liquid
Concentration:	1 mg/mL
Buffer:	phosphate buffered saline (without Mg ²⁺ and Ca ²⁺), pH 7.4, 150 mM NaCl, 0.02 % sodium azide and 50 % glycerol.
Preservative:	Sodium azide
Precaution of Use:	This product contains sodium azide: a POISONOUS AND HAZARDOUS SUBSTANCE which should be handled by trained staff only.
Storage:	-20 °C
Storage Comment:	Stable at -20°C for at least 1 year.
Expiry Date:	12 months



Western Blotting

Image 1. Western blot analysis of extracts from K562 cells, using MRPL51 Antibody. The lane on the right is treated with the synthesized peptide.



Immunohistochemistry

Image 2. Immunohistochemistry analysis of paraffin-embedded human tonsil tissue, using MRPL51 Antibody. The picture on the right is treated with the synthesized peptide.