



[Go to Product page](#)

Datasheet for ABIN1534535
anti-MRPL52 antibody (AA 71-120)

2 Images

Overview

Quantity:	100 µg
Target:	MRPL52
Binding Specificity:	AA 71-120
Reactivity:	Human
Host:	Rabbit
Clonality:	Polyclonal
Conjugate:	This MRPL52 antibody is un-conjugated
Application:	ELISA, Immunohistochemistry (IHC), Immunofluorescence (IF)

Product Details

Immunogen:	The antiserum was produced against synthesized peptide derived from human MRPL52.
Isotype:	IgG
Specificity:	MRPL52 Antibody detects endogenous levels of total MRPL52 protein.
Purification:	The antibody was purified from rabbit antiserum by affinity-chromatography using immunogen.
Purity:	> 95 %

Target Details

Target:	MRPL52
Alternative Name:	MRPL52 (MRPL52 Products)
Background:	Synonyms: 39S ribosomal protein L52 mitochondrial, L52mt, MRP-L52

Target Details

NCBI Gene Symbol: MRPL52

Molecular Weight: 13 kDa

Gene ID: 122704

OMIM: 611856

UniProt: [Q86TS9](#)

Application Details

Application Notes: IHC: 1:50~1:100 IF: 1:100~1:500 ELISA: 1:5000

Comment: Unigene-Number: Hs.355935 (NCBI Gene Symbol: MRPL52)

Restrictions: For Research Use only

Handling

Format: Liquid

Concentration: 1 mg/mL

Buffer: phosphate buffered saline (without Mg²⁺ and Ca²⁺), pH 7.4, 150 mM NaCl, 0.02 % sodium azide and 50 % glycerol.

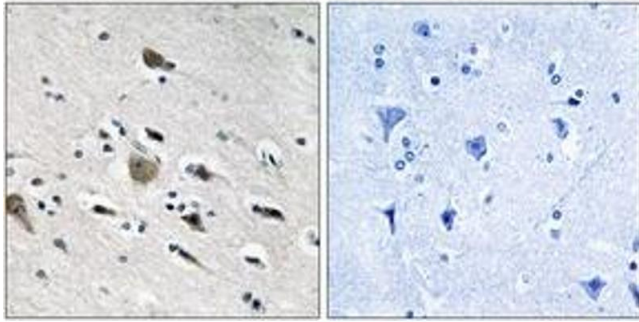
Preservative: Sodium azide

Precaution of Use: This product contains sodium azide: a POISONOUS AND HAZARDOUS SUBSTANCE which should be handled by trained staff only.

Storage: -20 °C

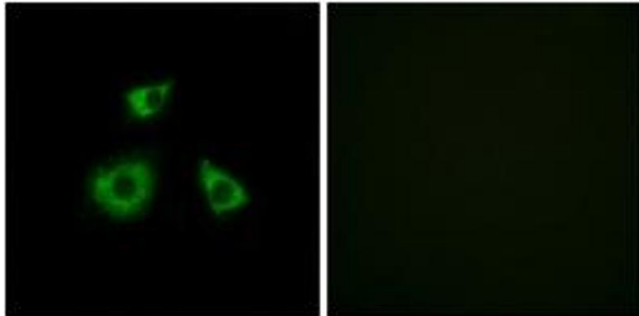
Storage Comment: Stable at -20°C for at least 1 year.

Expiry Date: 12 months



Immunohistochemistry

Image 1. Immunohistochemistry analysis of paraffin-embedded human brain tissue, using MRPL52 Antibody. The picture on the right is treated with the synthesized peptide.



Immunofluorescence

Image 2. Immunofluorescence analysis of HuvEc cells, using MRPL52 Antibody. The picture on the right is treated with the synthesized peptide.