

Datasheet for ABIN1534539
anti-RPS12 antibody (AA 83-132)

2 Images

[Go to Product page](#)

Overview

Quantity:	100 µg
Target:	RPS12
Binding Specificity:	AA 83-132
Reactivity:	Human, Mouse, Rat
Host:	Rabbit
Clonality:	Polyclonal
Conjugate:	This RPS12 antibody is un-conjugated
Application:	Western Blotting (WB), ELISA, Immunofluorescence (IF)

Product Details

Immunogen:	The antiserum was produced against synthesized peptide derived from human RPS12.
Isotype:	IgG
Specificity:	RPS12 Antibody detects endogenous levels of total RPS12 protein.
Purification:	The antibody was purified from rabbit antiserum by affinity-chromatography using immunogen.
Purity:	> 95 %

Target Details

Target:	RPS12
Alternative Name:	RPS12 (RPS12 Products)
Background:	Synonyms: 40S ribosomal protein S12

Target Details

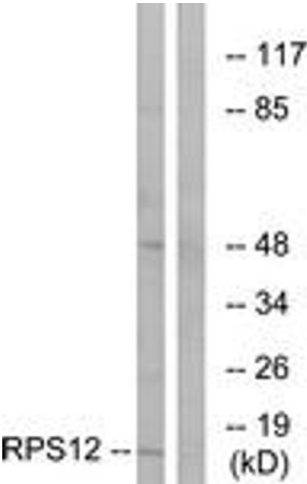
	NCBI Gene Symbol: RPS12
Molecular Weight:	14 kDa
Gene ID:	6206
OMIM:	603660
UniProt:	P25398

Application Details

Application Notes:	WB: 1:500~1:1000 IF: 1:100~1:500 ELISA: 1:40000
Comment:	Unigene-Number: Hs.546289 (NCBI Gene Symbol: RPS12)
Restrictions:	For Research Use only

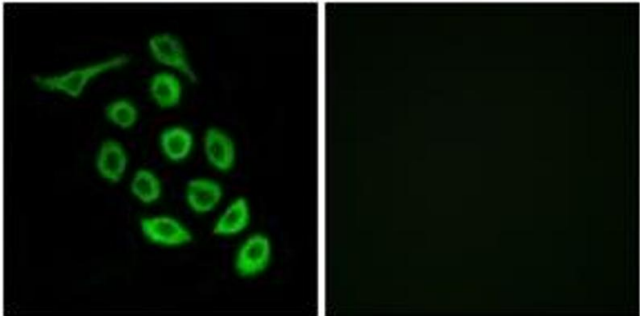
Handling

Format:	Liquid
Concentration:	1 mg/mL
Buffer:	phosphate buffered saline (without Mg ²⁺ and Ca ²⁺), pH 7.4, 150 mM NaCl, 0.02 % sodium azide and 50 % glycerol.
Preservative:	Sodium azide
Precaution of Use:	This product contains sodium azide: a POISONOUS AND HAZARDOUS SUBSTANCE which should be handled by trained staff only.
Storage:	-20 °C
Storage Comment:	Stable at -20°C for at least 1 year.
Expiry Date:	12 months



Western Blotting

Image 1. Western blot analysis of extracts from COLO cells, using RPS12 Antibody. The lane on the right is treated with the synthesized peptide.



Immunofluorescence

Image 2. Immunofluorescence analysis of A549 cells, using RPS12 Antibody. The picture on the right is treated with the synthesized peptide.