



[Go to Product page](#)

Datasheet for ABIN1534542
anti-RPS20 antibody (AA 31-80)

2 Images

Overview

Quantity:	100 µg
Target:	RPS20
Binding Specificity:	AA 31-80
Reactivity:	Human, Rat, Mouse
Host:	Rabbit
Clonality:	Polyclonal
Conjugate:	This RPS20 antibody is un-conjugated
Application:	Western Blotting (WB), ELISA, Immunofluorescence (IF)

Product Details

Immunogen:	The antiserum was produced against synthesized peptide derived from human RPS20.
Isotype:	IgG
Specificity:	RPS20 Antibody detects endogenous levels of total RPS20 protein.
Purification:	The antibody was purified from rabbit antiserum by affinity-chromatography using immunogen.
Purity:	> 95 %

Target Details

Target:	RPS20
Alternative Name:	RPS20 (RPS20 Products)
Background:	Synonyms: 40S ribosomal protein S20

Target Details

NCBI Gene Symbol: RPS20

Molecular Weight: 13 kDa

Gene ID: 6224

OMIM: 603682

UniProt: [P60866](#)

Application Details

Application Notes: WB: 1:500~1:1000 IF: 1:100~1:500 ELISA: 1:40000

Comment: Unigene-Number: Hs.8102 (NCBI Gene Symbol: RPS20)

Restrictions: For Research Use only

Handling

Format: Liquid

Concentration: 1 mg/mL

Buffer: phosphate buffered saline (without Mg²⁺ and Ca²⁺), pH 7.4, 150 mM NaCl, 0.02 % sodium azide and 50 % glycerol.

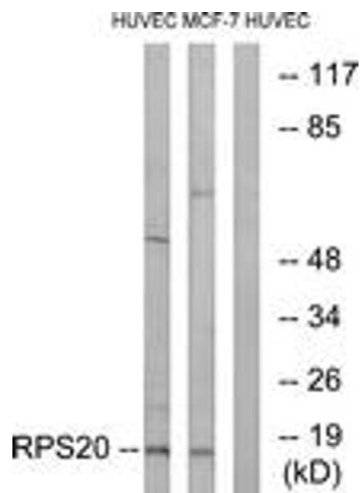
Preservative: Sodium azide

Precaution of Use: This product contains sodium azide: a POISONOUS AND HAZARDOUS SUBSTANCE which should be handled by trained staff only.

Storage: -20 °C

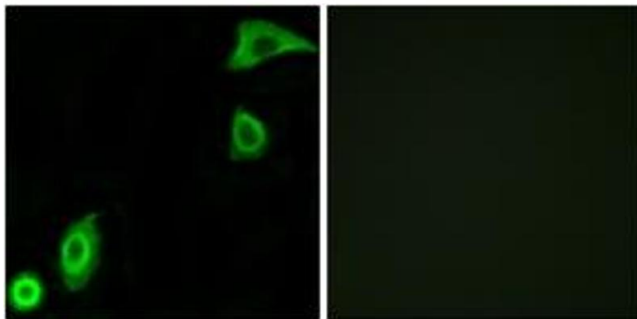
Storage Comment: Stable at -20°C for at least 1 year.

Expiry Date: 12 months



Western Blotting

Image 1. Western blot analysis of extracts from HuvEc/MCF-7 cells, using RPS20 Antibody. The lane on the right is treated with the synthesized peptide.



Immunofluorescence

Image 2. Immunofluorescence analysis of A549 cells, using RPS20 Antibody. The picture on the right is treated with the synthesized peptide.