



[Go to Product page](#)

Datasheet for ABIN1534551  
**anti-AZI1 antibody (AA 311-360)**

2 Images

Overview

Quantity:	100 µL
Target:	AZI1
Binding Specificity:	AA 311-360
Reactivity:	Human
Host:	Rabbit
Clonality:	Polyclonal
Conjugate:	This AZI1 antibody is un-conjugated
Application:	Western Blotting (WB), ELISA, Immunohistochemistry (IHC)

Product Details

Immunogen:	The antiserum was produced against synthesized peptide derived from human AZI1.
Isotype:	IgG
Specificity:	AZI1 Antibody detects endogenous levels of total AZI1 protein.
Purification:	The antibody was purified from rabbit antiserum by affinity-chromatography using immunogen.
Purity:	> 95 %

Target Details

Target:	AZI1
Alternative Name:	AZI1 ( <a href="#">AZI1 Products</a> )
Background:	Synonyms: 5-azacytidine-induced protein 1, Pre-acrosome localization protein 1, Centrosomal

## Target Details

---

protein of 131 kDa, Cep131

NCBI Gene Symbol: AZI1

Molecular Weight: 122 kDa

Gene ID: 22994

OMIM: 613479

UniProt: [Q9UPN4](#)

Pathways: [M Phase](#)

## Application Details

---

Application Notes: WB: 1:500~1:1000 IHC: 1:50~1:100 ELISA: 1:40000

Comment: Unigene-Number: Hs.514578, Hs.567423 (NCBI Gene Symbol: AZI1)

Restrictions: For Research Use only

## Handling

---

Format: Liquid

Concentration: 1 mg/mL

Buffer: phosphate buffered saline (without Mg<sup>2+</sup> and Ca<sup>2+</sup>), pH 7.4, 150 mM NaCl, 0.02 % sodium azide and 50 % glycerol.

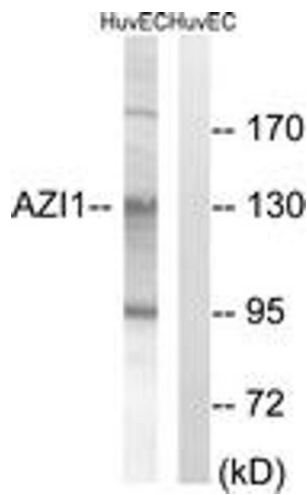
Preservative: Sodium azide

Precaution of Use: This product contains sodium azide: a POISONOUS AND HAZARDOUS SUBSTANCE which should be handled by trained staff only.

Storage: -20 °C

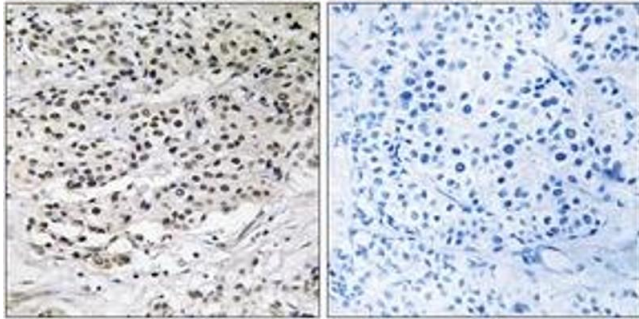
Storage Comment: Stable at -20°C for at least 1 year.

Expiry Date: 12 months



### Western Blotting

**Image 1.** Western blot analysis of extracts from HuvEc cells, using AZI1 Antibody. The lane on the right is treated with the synthesized peptide.



### Immunohistochemistry

**Image 2.** Immunohistochemistry analysis of paraffin-embedded human breast carcinoma tissue, using AZI1 Antibody. The picture on the right is treated with the synthesized peptide.