

Datasheet for ABIN1534555
anti-RPL12 antibody (AA 61-110)



[Go to Product page](#)

1 Image

Overview

Quantity:	100 µL
Target:	RPL12
Binding Specificity:	AA 61-110
Reactivity:	Human, Mouse, Rat
Host:	Rabbit
Clonality:	Polyclonal
Conjugate:	This RPL12 antibody is un-conjugated
Application:	Western Blotting (WB), ELISA

Product Details

Immunogen:	The antiserum was produced against synthesized peptide derived from human RPL12.
Isotype:	IgG
Specificity:	RPL12 Antibody detects endogenous levels of total RPL12 protein.
Purification:	The antibody was purified from rabbit antiserum by affinity-chromatography using immunogen.
Purity:	> 95 %

Target Details

Target:	RPL12
Alternative Name:	RPL12 (RPL12 Products)
Background:	Synonyms: 60S ribosomal protein L12, RPL12

Target Details

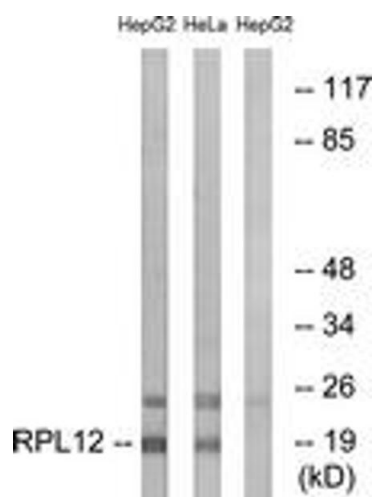
	NCBI Gene Symbol: RPL12
Molecular Weight:	17 kDa
Gene ID:	6136
OMIM:	180475
UniProt:	P30050

Application Details

Application Notes:	WB: 1:500~1:1000 ELISA: 1:40000
Comment:	Unigene-Number: Hs.408054 (NCBI Gene Symbol: RPL12)
Restrictions:	For Research Use only

Handling

Format:	Liquid
Concentration:	1 mg/mL
Buffer:	phosphate buffered saline (without Mg ²⁺ and Ca ²⁺), pH 7.4, 150 mM NaCl, 0.02 % sodium azide and 50 % glycerol.
Preservative:	Sodium azide
Precaution of Use:	This product contains sodium azide: a POISONOUS AND HAZARDOUS SUBSTANCE which should be handled by trained staff only.
Storage:	-20 °C
Storage Comment:	Stable at -20°C for at least 1 year.
Expiry Date:	12 months



Western Blotting

Image 1. Western blot analysis of extracts from HepG2/HeLa cells, using RPL12 Antibody. The lane on the right is treated with the synthesized peptide.