

Datasheet for ABIN1534564  
**anti-RPL3 antibody (AA 211-260)**



[Go to Product page](#)

2 Images

## Overview

|                      |  |
|----------------------|--|
| Quantity:            | 100 µL   |
| Target:              | RPL3   |
| Binding Specificity: | AA 211-260   |
| Reactivity:          | Human, Mouse, Rat  |
| Host:                | Rabbit   |
| Clonality:           | Polyclonal   |
| Conjugate:           | This RPL3 antibody is un-conjugated                      |
| Application:         | Western Blotting (WB), ELISA, Immunohistochemistry (IHC) |

## Product Details

|               |   |
|---------------|---|
| Immunogen:    | The antiserum was produced against synthesized peptide derived from human RPL3.             |
| Isotype:      | IgG   |
| Specificity:  | RPL3 Antibody detects endogenous levels of total RPL3 protein.                              |
| Purification: | The antibody was purified from rabbit antiserum by affinity-chromatography using immunogen. |
| Purity:       | > 95 %  |

## Target Details

|                   |  |
|-------------------|--|
| Target:           | RPL3   |
| Alternative Name: | RPL3 ( <a href="#">RPL3 Products</a> )                                       |
| Background:       | Synonyms: 60S ribosomal protein L3, HIV-1 TAR RNA-binding protein B, TARBP-B |

## Target Details

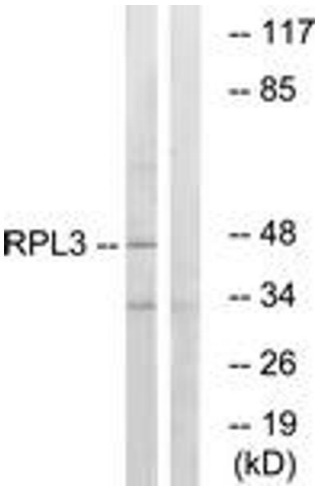
|                   |                        |
|-------------------|------------------------|
|                   | NCBI Gene Symbol: RPL3 |
| Molecular Weight: | 46 kDa                 |
| Gene ID:          | 6122                   |
| OMIM:             | 604163                 |
| UniProt:          | <a href="#">P39023</a> |

## Application Details

|                    |  |
|--------------------|--|
| Application Notes: | WB: 1:500~1:1000 IHC: 1:50~1:100 ELISA: 1:5000     |
| Comment:           | Unigene-Number: Hs.119598 (NCBI Gene Symbol: RPL3) |
| Restrictions:      | For Research Use only                              |

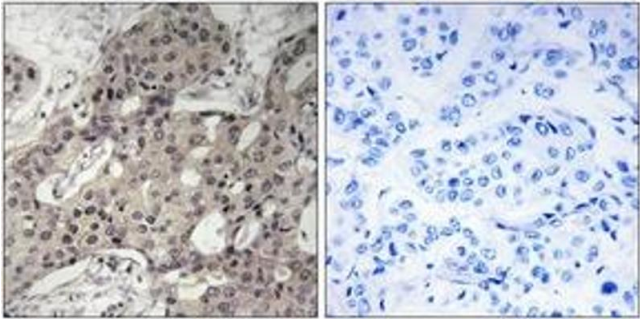
## Handling

|                    |   |
|--------------------|---|
| Format:            | Liquid  |
| Concentration:     | 1 mg/mL   |
| Buffer:            | phosphate buffered saline (without Mg <sup>2+</sup> and Ca <sup>2+</sup> ), pH 7.4, 150 mM NaCl, 0.02 % sodium azide and 50 % glycerol. |
| Preservative:      | Sodium azide  |
| Precaution of Use: | This product contains sodium azide: a POISONOUS AND HAZARDOUS SUBSTANCE which should be handled by trained staff only.                  |
| Storage:           | -20 °C  |
| Storage Comment:   | Stable at -20°C for at least 1 year.  |
| Expiry Date:       | 12 months   |



Western Blotting

**Image 1.** Western blot analysis of extracts from HT-29 cells, using RPL3 Antibody. The lane on the right is treated with the synthesized peptide.



Immunohistochemistry

**Image 2.** Immunohistochemistry analysis of paraffin-embedded human breast carcinoma tissue, using RPL3 Antibody. The picture on the right is treated with the synthesized peptide.