

Datasheet for ABIN1534567
anti-RPL34 antibody (AA 41-90)[Go to Product page](#)

2 Images

Overview

Quantity:	100 µg
Target:	RPL34
Binding Specificity:	AA 41-90
Reactivity:	Human, Mouse, Rat
Host:	Rabbit
Clonality:	Polyclonal
Conjugate:	This RPL34 antibody is un-conjugated
Application:	ELISA, Western Blotting (WB), Immunofluorescence (IF)

Product Details

Immunogen:	The antiserum was produced against synthesized peptide derived from human RPL34.
Isotype:	IgG
Specificity:	RPL34 Antibody detects endogenous levels of total RPL34 protein.
Purification:	The antibody was purified from rabbit antiserum by affinity-chromatography using immunogen.
Purity:	> 95 %

Target Details

Target:	RPL34
Alternative Name:	RPL34 (RPL34 Products)
Background:	Synonyms: 60S ribosomal protein L34

Target Details

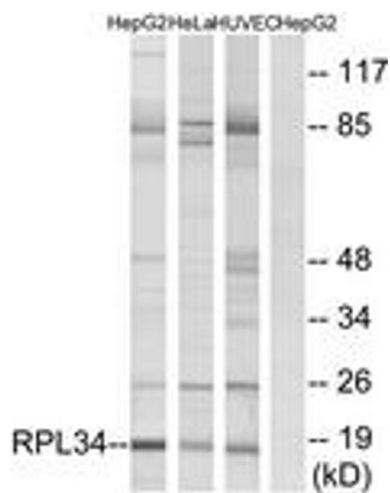
	NCBI Gene Symbol: RPL34
Molecular Weight:	13 kDa
Gene ID:	6164
UniProt:	P49207

Application Details

Application Notes:	WB: 1:500~1:1000 IF: 1:100~1:500 ELISA: 1:20000
Comment:	Unigene-Number: Hs.438227 (NCBI Gene Symbol: RPL34)
Restrictions:	For Research Use only

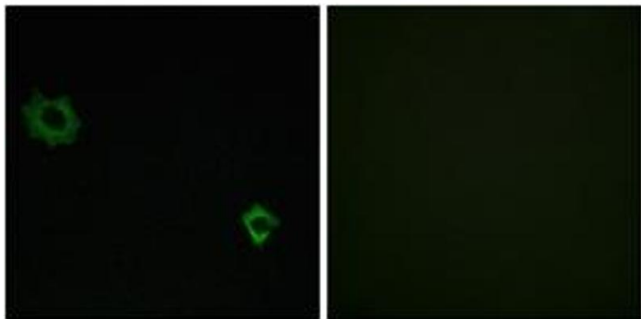
Handling

Format:	Liquid
Concentration:	1 mg/mL
Buffer:	phosphate buffered saline (without Mg ²⁺ and Ca ²⁺), pH 7.4, 150 mM NaCl, 0.02 % sodium azide and 50 % glycerol.
Preservative:	Sodium azide
Precaution of Use:	This product contains sodium azide: a POISONOUS AND HAZARDOUS SUBSTANCE which should be handled by trained staff only.
Storage:	-20 °C
Storage Comment:	Stable at -20°C for at least 1 year.
Expiry Date:	12 months



Western Blotting

Image 1. Western blot analysis of extracts from HepG2/HeLa/HuvEc cells, using RPL34 Antibody. The lane on the right is treated with the synthesized peptide.



Immunofluorescence

Image 2. Immunofluorescence analysis of HuvEc cells, using RPL34 Antibody. The picture on the right is treated with the synthesized peptide.