

Datasheet for ABIN1534569
anti-RPL36 antibody (AA 51-100)

3 Images

[Go to Product page](#)

Overview

Quantity:	100 µg
Target:	RPL36
Binding Specificity:	AA 51-100
Reactivity:	Human, Mouse, Rat
Host:	Rabbit
Clonality:	Polyclonal
Conjugate:	This RPL36 antibody is un-conjugated
Application:	Western Blotting (WB), Immunohistochemistry (IHC), ELISA, Immunofluorescence (IF)

Product Details

Immunogen:	The antiserum was produced against synthesized peptide derived from human RPL36.
Isotype:	IgG
Specificity:	RPL36 Antibody detects endogenous levels of total RPL36 protein.
Purification:	The antibody was purified from rabbit antiserum by affinity-chromatography using immunogen.
Purity:	> 95 %

Target Details

Target:	RPL36
Alternative Name:	RPL36 (RPL36 Products)
Background:	Synonyms: 60S ribosomal protein L36

Target Details

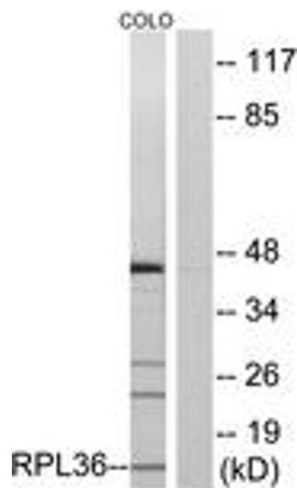
	NCBI Gene Symbol: RPL36
Molecular Weight:	12 kDa
Gene ID:	25873
UniProt:	Q9Y3U8
Pathways:	SARS-CoV-2 Protein Interactome

Application Details

Application Notes:	WB: 1:500~1:1000 IHC: 1:50~1:100 IF: 1:100~1:500 ELISA: 1:40000
Comment:	Unigene-Number: Hs.408018 (NCBI Gene Symbol: RPL36)
Restrictions:	For Research Use only

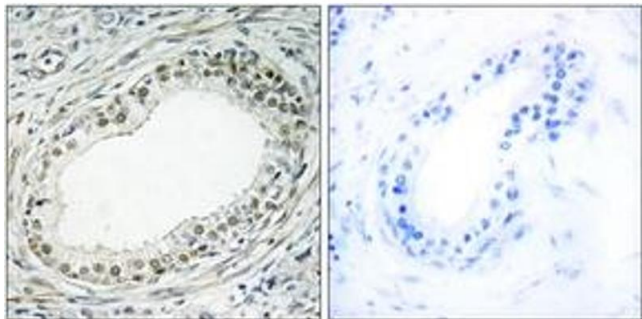
Handling

Format:	Liquid
Concentration:	1 mg/mL
Buffer:	phosphate buffered saline (without Mg ²⁺ and Ca ²⁺), pH 7.4, 150 mM NaCl, 0.02 % sodium azide and 50 % glycerol.
Preservative:	Sodium azide
Precaution of Use:	This product contains sodium azide: a POISONOUS AND HAZARDOUS SUBSTANCE which should be handled by trained staff only.
Storage:	-20 °C
Storage Comment:	Stable at -20°C for at least 1 year.
Expiry Date:	12 months



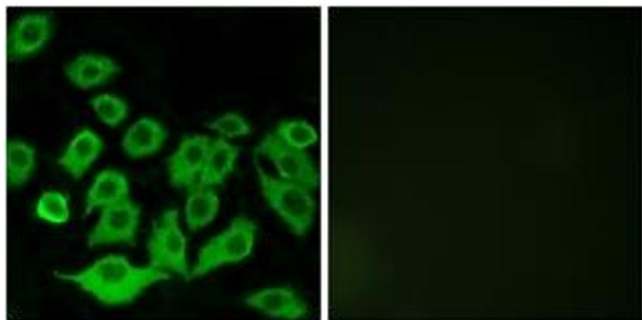
Western Blotting

Image 1. Western blot analysis of extracts from COLO cells, using RPL36 Antibody. The lane on the right is treated with the synthesized peptide.



Immunohistochemistry

Image 2. Immunohistochemistry analysis of paraffin-embedded human prostate carcinoma tissue, using RPL36 Antibody. The picture on the right is treated with the synthesized peptide.



Immunofluorescence

Image 3. Immunofluorescence analysis of A549 cells, using RPL36 Antibody. The picture on the right is treated with the synthesized peptide.