



[Go to Product page](#)

Datasheet for ABIN1534571
anti-RPL37A antibody (AA 21-70)

1 Image

Overview

Quantity:	100 µL
Target:	RPL37A
Binding Specificity:	AA 21-70
Reactivity:	Human, Mouse, Rat
Host:	Rabbit
Clonality:	Polyclonal
Conjugate:	This RPL37A antibody is un-conjugated
Application:	Immunohistochemistry (IHC), ELISA

Product Details

Immunogen:	The antiserum was produced against synthesized peptide derived from human RPL37A.
Isotype:	IgG
Specificity:	RPL37A Antibody detects endogenous levels of total RPL37A protein.
Purification:	The antibody was purified from rabbit antiserum by affinity-chromatography using immunogen.
Purity:	> 95 %

Target Details

Target:	RPL37A
Alternative Name:	RPL37A (RPL37A Products)
Background:	Synonyms: 60S ribosomal protein L37a

Target Details

NCBI Gene Symbol: RPL37A

Molecular Weight: 10 kDa

Gene ID: 6168

OMIM: 613314

UniProt: [P61513](#)

Application Details

Application Notes: IHC: 1:50~1:100 ELISA: 1:60000

Comment: Unigene-Number: Hs.433701 (NCBI Gene Symbol: RPL37A)

Restrictions: For Research Use only

Handling

Format: Liquid

Concentration: 1 mg/mL

Buffer: phosphate buffered saline (without Mg²⁺ and Ca²⁺), pH 7.4, 150 mM NaCl, 0.02 % sodium azide and 50 % glycerol.

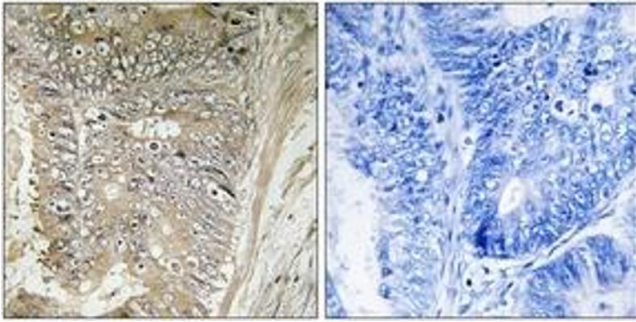
Preservative: Sodium azide

Precaution of Use: This product contains sodium azide: a POISONOUS AND HAZARDOUS SUBSTANCE which should be handled by trained staff only.

Storage: -20 °C

Storage Comment: Stable at -20°C for at least 1 year.

Expiry Date: 12 months



Immunohistochemistry

Image 1. Immunohistochemistry analysis of paraffin-embedded human colon carcinoma tissue, using RPL37A Antibody. The picture on the right is treated with the synthesized peptide.