

Datasheet for ABIN1534572
anti-RPL39 antibody (AA 1-50)[Go to Product page](#)

2 Images

Overview

Quantity:	100 µg
Target:	RPL39
Binding Specificity:	AA 1-50
Reactivity:	Mouse, Human, Rat
Host:	Rabbit
Clonality:	Polyclonal
Conjugate:	This RPL39 antibody is un-conjugated
Application:	Western Blotting (WB), ELISA, Immunofluorescence (IF)

Product Details

Immunogen:	The antiserum was produced against synthesized peptide derived from human RPL39.
Isotype:	IgG
Specificity:	RPL39 Antibody detects endogenous levels of total RPL39 protein.
Purification:	The antibody was purified from rabbit antiserum by affinity-chromatography using immunogen.
Purity:	> 95 %

Target Details

Target:	RPL39
Alternative Name:	RPL39 (RPL39 Products)
Background:	Synonyms: 60S ribosomal protein L39

Target Details

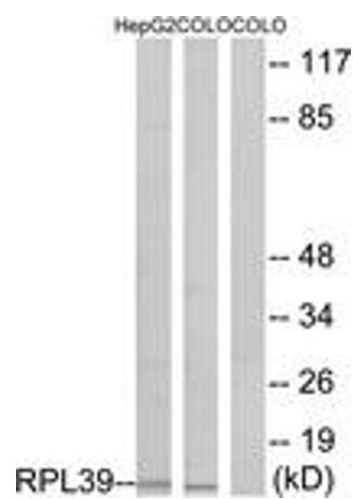
	NCBI Gene Symbol: RPL39
Molecular Weight:	6 kDa
Gene ID:	6170
OMIM:	601904
UniProt:	P62891

Application Details

Application Notes:	WB: 1:500~1:1000 IF: 1:100~1:500 ELISA: 1:60000
Comment:	Unigene-Number: Hs.300141, Hs.558387 (NCBI Gene Symbol: RPL39)
Restrictions:	For Research Use only

Handling

Format:	Liquid
Concentration:	1 mg/mL
Buffer:	phosphate buffered saline (without Mg ²⁺ and Ca ²⁺), pH 7.4, 150 mM NaCl, 0.02 % sodium azide and 50 % glycerol.
Preservative:	Sodium azide
Precaution of Use:	This product contains sodium azide: a POISONOUS AND HAZARDOUS SUBSTANCE which should be handled by trained staff only.
Storage:	-20 °C
Storage Comment:	Stable at -20°C for at least 1 year.
Expiry Date:	12 months



Western Blotting

Image 1. Western blot analysis of extracts from COLO/HepG2 cells, using RPL39 Antibody. The lane on the right is treated with the synthesized peptide.



Immunofluorescence

Image 2. Immunofluorescence analysis of A549 cells, using RPL39 Antibody. The picture on the right is treated with the synthesized peptide.