

Datasheet for ABIN1534578  
**anti-PGLS antibody (AA 191-240)**

## 2 Images

[Go to Product page](#)

## Overview

Quantity:	100 µg
Target:	PGLS
Binding Specificity:	AA 191-240
Reactivity:	Human
Host:	Rabbit
Clonality:	Polyclonal
Conjugate:	This PGLS antibody is un-conjugated
Application:	Western Blotting (WB), Immunohistochemistry (IHC), ELISA

## Product Details

Immunogen:	The antiserum was produced against synthesized peptide derived from human PGLS.
Isotype:	IgG
Specificity:	PGLS Antibody detects endogenous levels of total PGLS protein.
Purification:	The antibody was purified from rabbit antiserum by affinity-chromatography using immunogen.
Purity:	> 95 %

## Target Details

Target:	PGLS
Alternative Name:	PGLS ( <a href="#">PGLS Products</a> )
Background:	Synonyms: 6-phosphogluconolactonase, 6PGL

## Target Details

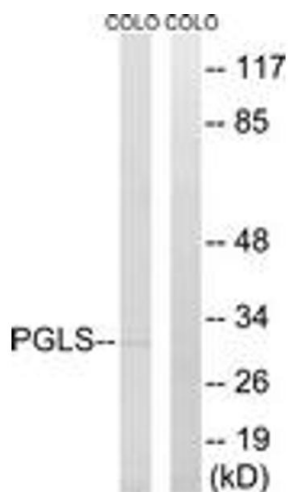
	NCBI Gene Symbol: PGLS
Molecular Weight:	27 kDa
Gene ID:	25796
OMIM:	604951
UniProt:	<a href="#">O95336</a>

## Application Details

Application Notes:	WB: 1:500~1:1000 IHC: 1:50~1:100 ELISA: 1:40000
Comment:	Unigene-Number: Hs.466165 (NCBI Gene Symbol: PGLS)
Restrictions:	For Research Use only

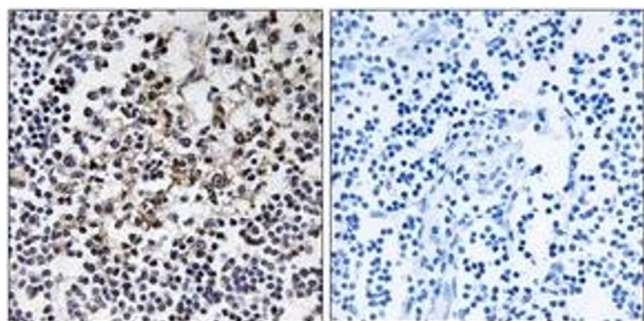
## Handling

Format:	Liquid
Concentration:	1 mg/mL
Buffer:	phosphate buffered saline (without Mg <sup>2+</sup> and Ca <sup>2+</sup> ), pH 7.4, 150 mM NaCl, 0.02 % sodium azide and 50 % glycerol.
Preservative:	Sodium azide
Precaution of Use:	This product contains sodium azide: a POISONOUS AND HAZARDOUS SUBSTANCE which should be handled by trained staff only.
Storage:	-20 °C
Storage Comment:	Stable at -20°C for at least 1 year.
Expiry Date:	12 months



#### Western Blotting

**Image 1.** Western blot analysis of extracts from COLO cells, using PGLS Antibody. The lane on the right is treated with the synthesized peptide.



#### Immunohistochemistry

**Image 2.** Immunohistochemistry analysis of paraffin-embedded human lymph node tissue, using PGLS Antibody. The picture on the right is treated with the synthesized peptide.