

Datasheet for ABIN1534579

**anti-ABHD11 antibody (AA 161-210)**[Go to Product page](#)**1** Image

## Overview

|                      |                                       |
|----------------------|---------------------------------------|
| Quantity:            | 100 µL                                |
| Target:              | ABHD11                                |
| Binding Specificity: | AA 161-210                            |
| Reactivity:          | Human                                 |
| Host:                | Rabbit                                |
| Clonality:           | Polyclonal                            |
| Conjugate:           | This ABHD11 antibody is un-conjugated |
| Application:         | ELISA, Western Blotting (WB)          |

## Product Details

|               |                                                                                             |
|---------------|---------------------------------------------------------------------------------------------|
| Immunogen:    | The antiserum was produced against synthesized peptide derived from human ABHD11.           |
| Isotype:      | IgG                                                                                         |
| Specificity:  | ABHD11 Antibody detects endogenous levels of total ABHD11 protein.                          |
| Purification: | The antibody was purified from rabbit antiserum by affinity-chromatography using immunogen. |
| Purity:       | > 95 %                                                                                      |

## Target Details

|                   |                                                                              |
|-------------------|------------------------------------------------------------------------------|
| Target:           | ABHD11                                                                       |
| Alternative Name: | ABHD11 ( <a href="#">ABHD11 Products</a> )                                   |
| Background:       | Synonyms: Abhydrolase domain-containing protein 11, Williams-Beuren syndrome |

### Target Details

chromosomal region 21 protein  
NCBI Gene Symbol: ABHD11

Molecular Weight: 34 kDa

Gene ID: 83451

UniProt: [Q8NFV4](#)

### Application Details

Application Notes: WB: 1:500~1:1000 ELISA: 1:20000

Comment: Unigene-Number: Hs.647045 (NCBI Gene Symbol: ABHD11)

Restrictions: For Research Use only

### Handling

Format: Liquid

Concentration: 1 mg/mL

Buffer: phosphate buffered saline (without Mg<sup>2+</sup> and Ca<sup>2+</sup>), pH 7.4, 150 mM NaCl, 0.02 % sodium azide and 50 % glycerol.

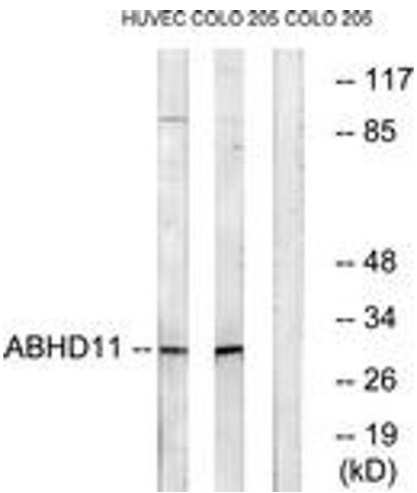
Preservative: Sodium azide

Precaution of Use: This product contains sodium azide: a POISONOUS AND HAZARDOUS SUBSTANCE which should be handled by trained staff only.

Storage: -20 °C

Storage Comment: Stable at -20°C for at least 1 year.

Expiry Date: 12 months



Western Blotting

**Image 1.** Western blot analysis of extracts from COLO/HuvEc cells, using ABHD11 Antibody. The lane on the right is treated with the synthesized peptide.