

Datasheet for ABIN1534585
anti-ABHD6 antibody (AA 231-280)[Go to Product page](#)

2 Images

Overview

Quantity:	100 µg
Target:	ABHD6
Binding Specificity:	AA 231-280
Reactivity:	Human, Mouse, Rat
Host:	Rabbit
Clonality:	Polyclonal
Conjugate:	This ABHD6 antibody is un-conjugated
Application:	ELISA, Western Blotting (WB), Immunofluorescence (IF)

Product Details

Immunogen:	The antiserum was produced against synthesized peptide derived from human ABHD6.
Isotype:	IgG
Specificity:	ABHD6 Antibody detects endogenous levels of total ABHD6 protein.
Purification:	The antibody was purified from rabbit antiserum by affinity-chromatography using immunogen.
Purity:	> 95 %

Target Details

Target:	ABHD6
Alternative Name:	ABHD6 (ABHD6 Products)
Background:	Synonyms: Monoacylglycerol lipase ABHD6, 2-arachidonoylglycerol hydrolase, Abhydrolase

Target Details

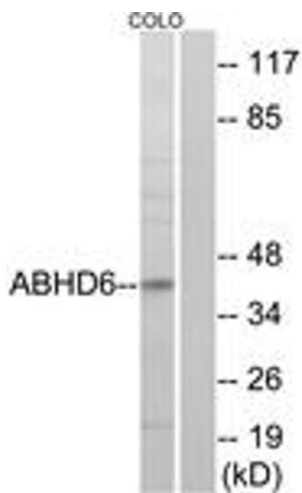
	domain-containing protein 6 , ABHD6 NCBI Gene Symbol: ABHD6
Molecular Weight:	38 kDa
Gene ID:	57406
UniProt:	Q9BV23
Pathways:	Regulation of G-Protein Coupled Receptor Protein Signaling

Application Details

Application Notes:	WB: 1:500~1:1000 IF: 1:100~1:500 ELISA: 1:20000
Comment:	Unigene-Number: Hs.476454 (NCBI Gene Symbol: ABHD6)
Restrictions:	For Research Use only

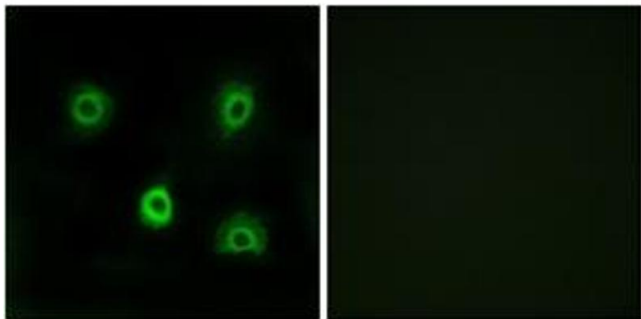
Handling

Format:	Liquid
Concentration:	1 mg/mL
Buffer:	phosphate buffered saline (without Mg ²⁺ and Ca ²⁺), pH 7.4, 150 mM NaCl, 0.02 % sodium azide and 50 % glycerol.
Preservative:	Sodium azide
Precaution of Use:	This product contains sodium azide: a POISONOUS AND HAZARDOUS SUBSTANCE which should be handled by trained staff only.
Storage:	-20 °C
Storage Comment:	Stable at -20°C for at least 1 year.
Expiry Date:	12 months



Western Blotting

Image 1. Western blot analysis of extracts from COLO cells, using ABHD6 Antibody. The lane on the right is treated with the synthesized peptide.



Immunofluorescence

Image 2. Immunofluorescence analysis of A549 cells, using ABHD6 Antibody. The picture on the right is treated with the synthesized peptide.