



Datasheet for ABIN1534595
anti-AWAT1 antibody (AA 261-310)



[Go to Product page](#)

1 Image

Overview

Quantity:	100 µL
Target:	AWAT1
Binding Specificity:	AA 261-310
Reactivity:	Human
Host:	Rabbit
Clonality:	Polyclonal
Conjugate:	This AWAT1 antibody is un-conjugated
Application:	Western Blotting (WB), ELISA

Product Details

Immunogen:	The antiserum was produced against synthesized peptide derived from human AWAT1.
Isotype:	IgG
Specificity:	AWAT1 Antibody detects endogenous levels of total AWAT1 protein.
Purification:	The antibody was purified from rabbit antiserum by affinity-chromatography using immunogen.
Purity:	> 95 %

Target Details

Target:	AWAT1
Alternative Name:	AWAT1 (AWAT1 Products)
Background:	Synonyms: Acyl-CoA wax alcohol acyltransferase 1, Long-chain-alcohol O-fatty-acyltransferase

Target Details

1, Diacylglycerol O-acyltransferase 2-like protein 3, Diacyl-glycerol acyltransferase 2
NCBI Gene Symbol: AWAT1

Molecular Weight: 37 kDa

Gene ID: 158833

UniProt: [Q58HT5](#)

Application Details

Application Notes: WB: 1:500~1:1000 ELISA: 1:1000

Comment: Unigene-Number: Hs.407641 (NCBI Gene Symbol: AWAT1)

Restrictions: For Research Use only

Handling

Format: Liquid

Concentration: 1 mg/mL

Buffer: phosphate buffered saline (without Mg²⁺ and Ca²⁺), pH 7.4, 150 mM NaCl, 0.02 % sodium azide and 50 % glycerol.

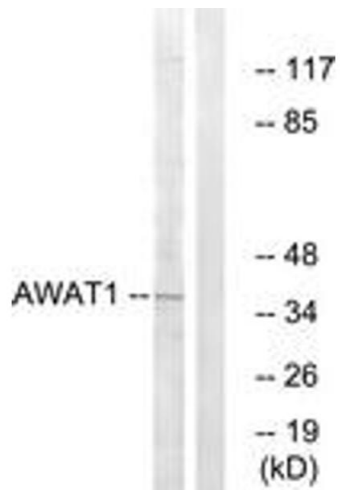
Preservative: Sodium azide

Precaution of Use: This product contains sodium azide: a POISONOUS AND HAZARDOUS SUBSTANCE which should be handled by trained staff only.

Storage: -20 °C

Storage Comment: Stable at -20°C for at least 1 year.

Expiry Date: 12 months



Western Blotting

Image 1. Western blot analysis of extracts from 293 cells, using AWAT1 Antibody. The lane on the right is treated with the synthesized peptide.