

Datasheet for ABIN1534605

anti-SLC25A31 antibody (AA 131-180)[Go to Product page](#)**1** Image

Overview

Quantity:	100 µL
Target:	SLC25A31
Binding Specificity:	AA 131-180
Reactivity:	Human, Mouse
Host:	Rabbit
Clonality:	Polyclonal
Conjugate:	This SLC25A31 antibody is un-conjugated
Application:	Western Blotting (WB), ELISA

Product Details

Immunogen:	The antiserum was produced against synthesized peptide derived from human SLC25A31.
Isotype:	IgG
Specificity:	SLC25A31 Antibody detects endogenous levels of total SLC25A31 protein.
Purification:	The antibody was purified from rabbit antiserum by affinity-chromatography using immunogen.
Purity:	> 95 %

Target Details

Target:	SLC25A31
Alternative Name:	SLC25A31 (SLC25A31 Products)
Background:	Synonyms: ADP/ATP translocase 4, Adenine nucleotide translocator 4, ANT 4, ADP,ATP carrier

Target Details

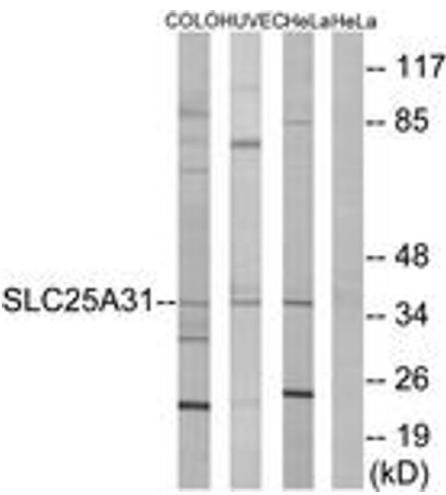
	protein 4, Sperm flagellar energy carrier protein, Solute carrier family 25 member 31 NCBI Gene Symbol: SLC25A31
Molecular Weight:	35 kDa
Gene ID:	83447
OMIM:	610796
UniProt:	Q9H0C2

Application Details

Application Notes:	WB: 1:500~1:1000 ELISA: 1:40000
Comment:	Unigene-Number: Hs.149030 (NCBI Gene Symbol: SLC25A31)
Restrictions:	For Research Use only

Handling

Format:	Liquid
Concentration:	1 mg/mL
Buffer:	phosphate buffered saline (without Mg ²⁺ and Ca ²⁺), pH 7.4, 150 mM NaCl, 0.02 % sodium azide and 50 % glycerol.
Preservative:	Sodium azide
Precaution of Use:	This product contains sodium azide: a POISONOUS AND HAZARDOUS SUBSTANCE which should be handled by trained staff only.
Storage:	-20 °C
Storage Comment:	Stable at -20°C for at least 1 year.
Expiry Date:	12 months



Western Blotting

Image 1. Western blot analysis of extracts from HeLa/HuvEc/COLO cells, using SLC25A31 Antibody. The lane on the right is treated with the synthesized peptide.