

Datasheet for ABIN1534609

anti-ARL2BP antibody (AA 101-150)[Go to Product page](#)**1** Image

Overview

Quantity:	100 µL
Target:	ARL2BP
Binding Specificity:	AA 101-150
Reactivity:	Human, Mouse, Rat
Host:	Rabbit
Clonality:	Polyclonal
Conjugate:	This ARL2BP antibody is un-conjugated
Application:	Western Blotting (WB), ELISA

Product Details

Immunogen:	The antiserum was produced against synthesized peptide derived from human ARL2BP.
Isotype:	IgG
Specificity:	ARL2BP Antibody detects endogenous levels of total ARL2BP protein.
Purification:	The antibody was purified from rabbit antiserum by affinity-chromatography using immunogen.
Purity:	> 95 %

Target Details

Target:	ARL2BP
Alternative Name:	ARL2BP (ARL2BP Products)
Background:	Synonyms: ADP-ribosylation factor-like protein 2-binding protein, ARF-like 2-binding protein,

Target Details

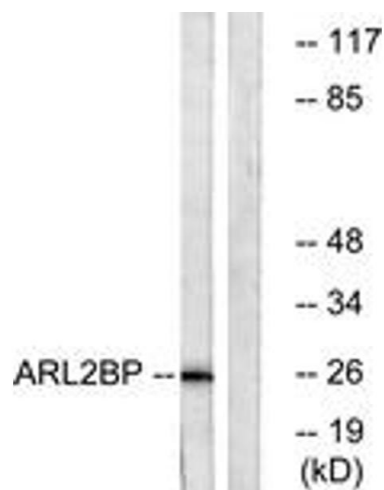
	Binder of ARF2 protein 1 NCBI Gene Symbol: ARL2BP
Molecular Weight:	18 kDa
Gene ID:	23568
UniProt:	Q9Y2Y0
Pathways:	Maintenance of Protein Location

Application Details

Application Notes:	WB: 1:500~1:1000 ELISA: 1:20000
Comment:	Unigene-Number: Hs.632873, Hs.723856 (NCBI Gene Symbol: ARL2BP)
Restrictions:	For Research Use only

Handling

Format:	Liquid
Concentration:	1 mg/mL
Buffer:	phosphate buffered saline (without Mg2+ and Ca2+), pH 7.4, 150 mM NaCl, 0.02 % sodium azide and 50 % glycerol.
Preservative:	Sodium azide
Precaution of Use:	This product contains sodium azide: a POISONOUS AND HAZARDOUS SUBSTANCE which should be handled by trained staff only.
Storage:	-20 °C
Storage Comment:	Stable at -20°C for at least 1 year.
Expiry Date:	12 months



Western Blotting

Image 1. Western blot analysis of extracts from A549 cells, using ARL2BP Antibody. The lane on the right is treated with the synthesized peptide.