

Datasheet for ABIN1534613
anti-ALDH3B1 antibody (AA 51-100)[Go to Product page](#)

2 Images

Overview

Quantity:	100 µg
Target:	ALDH3B1
Binding Specificity:	AA 51-100
Reactivity:	Human
Host:	Rabbit
Clonality:	Polyclonal
Conjugate:	This ALDH3B1 antibody is un-conjugated
Application:	Western Blotting (WB), ELISA, Immunohistochemistry (IHC)

Product Details

Immunogen:	The antiserum was produced against synthesized peptide derived from human ALDH3B1.
Isotype:	IgG
Specificity:	ALDH3B1 Antibody detects endogenous levels of total ALDH3B1 protein.
Purification:	The antibody was purified from rabbit antiserum by affinity-chromatography using immunogen.
Purity:	> 95 %

Target Details

Target:	ALDH3B1
Alternative Name:	ALDH3B1 (ALDH3B1 Products)
Background:	Synonyms: Aldehyde dehydrogenase 3B1, Aldehyde dehydrogenase 7

Target Details

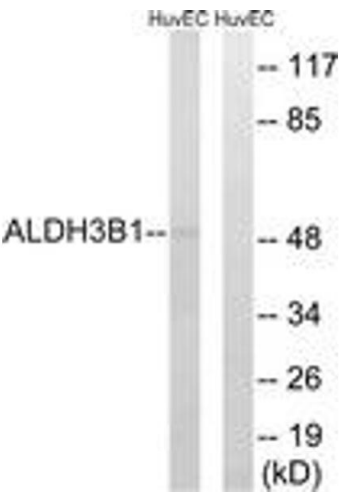
	NCBI Gene Symbol: ALDH3B1
Molecular Weight:	51 kDa
Gene ID:	221
OMIM:	600466
UniProt:	P43353
Pathways:	Monocarboxylic Acid Catabolic Process

Application Details

Application Notes:	WB: 1:500~1:1000 IHC: 1:50~1:100 ELISA: 1:40000
Comment:	Unigene-Number: Hs.523841 (NCBI Gene Symbol: ALDH3B1)
Restrictions:	For Research Use only

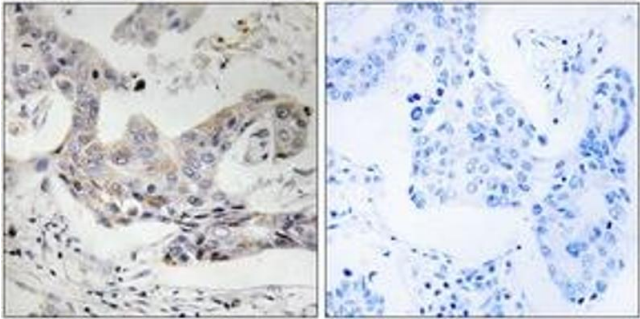
Handling

Format:	Liquid
Concentration:	1 mg/mL
Buffer:	phosphate buffered saline (without Mg ²⁺ and Ca ²⁺), pH 7.4, 150 mM NaCl, 0.02 % sodium azide and 50 % glycerol.
Preservative:	Sodium azide
Precaution of Use:	This product contains sodium azide: a POISONOUS AND HAZARDOUS SUBSTANCE which should be handled by trained staff only.
Storage:	-20 °C
Storage Comment:	Stable at -20°C for at least 1 year.
Expiry Date:	12 months



Western Blotting

Image 1. Western blot analysis of extracts from HuvEc cells, using ALDH3B1 Antibody. The lane on the right is treated with the synthesized peptide.



Immunohistochemistry

Image 2. Immunohistochemistry analysis of paraffin-embedded human breast carcinoma tissue, using ALDH3B1 Antibody. The picture on the right is treated with the synthesized peptide.