



[Go to Product page](#)

Datasheet for ABIN1534621
anti-ACER3 antibody (AA 171-220)

3 Images

Overview

Quantity:	100 µL
Target:	ACER3
Binding Specificity:	AA 171-220
Reactivity:	Human, Mouse
Host:	Rabbit
Clonality:	Polyclonal
Conjugate:	This ACER3 antibody is un-conjugated
Application:	Western Blotting (WB), ELISA, Immunohistochemistry (IHC), Immunofluorescence (IF)

Product Details

Immunogen:	The antiserum was produced against synthesized peptide derived from human PHCA.
Isotype:	IgG
Specificity:	PHCA Antibody detects endogenous levels of total PHCA protein.
Purification:	The antibody was purified from rabbit antiserum by affinity-chromatography using immunogen.
Purity:	> 95 %

Target Details

Target:	ACER3
Alternative Name:	PHCA (ACER3 Products)
Background:	Synonyms: Alkaline phytoceramidase, aPHC, Alkaline ceramidase, Alkaline dihydroceramidase

Target Details

SB89
NCBI Gene Symbol: ACER3

Molecular Weight: 31 kDa

Gene ID: 55331

UniProt: [Q9NUN7](#)

Application Details

Application Notes: WB: 1:500~1:1000 IHC: 1:50~1:100 IF: 1:100~1:500 ELISA: 1:40000

Comment: Unigene-Number: Hs.23862 (NCBI Gene Symbol: ACER3)

Restrictions: For Research Use only

Handling

Format: Liquid

Concentration: 1 mg/mL

Buffer: phosphate buffered saline (without Mg²⁺ and Ca²⁺), pH 7.4, 150 mM NaCl, 0.02 % sodium azide and 50 % glycerol.

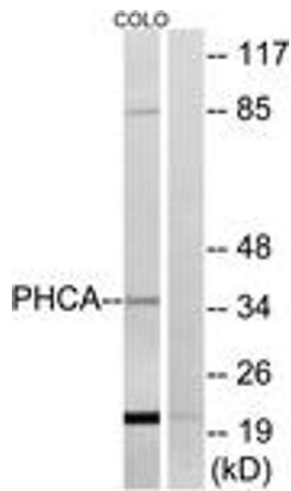
Preservative: Sodium azide

Precaution of Use: This product contains sodium azide: a POISONOUS AND HAZARDOUS SUBSTANCE which should be handled by trained staff only.

Storage: -20 °C

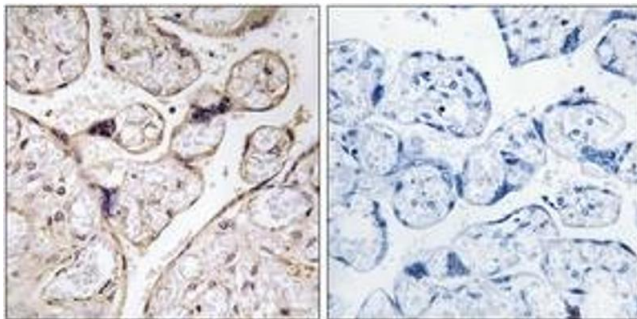
Storage Comment: Stable at -20°C for at least 1 year.

Expiry Date: 12 months



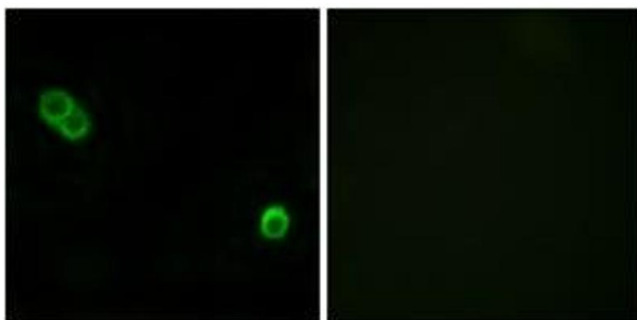
Western Blotting

Image 1. Western blot analysis of extracts from COLO cells, using PHCA Antibody. The lane on the right is treated with the synthesized peptide.



Immunohistochemistry

Image 2. Immunohistochemistry analysis of paraffin-embedded human placenta tissue, using PHCA Antibody. The picture on the right is treated with the synthesized peptide.



Immunofluorescence

Image 3. Immunofluorescence analysis of MCF7 cells, using PHCA Antibody. The picture on the right is treated with the synthesized peptide.