

Datasheet for ABIN1534628
anti-APBA3 antibody (AA 361-410)



[Go to Product page](#)

1 Image

Overview

Quantity:	100 µL
Target:	APBA3
Binding Specificity:	AA 361-410
Reactivity:	Human
Host:	Rabbit
Clonality:	Polyclonal
Conjugate:	This APBA3 antibody is un-conjugated
Application:	Western Blotting (WB), ELISA

Product Details

Immunogen:	The antiserum was produced against synthesized peptide derived from human APBA3.
Isotype:	IgG
Specificity:	APBA3 Antibody detects endogenous levels of total APBA3 protein.
Purification:	The antibody was purified from rabbit antiserum by affinity-chromatography using immunogen.
Purity:	> 95 %

Target Details

Target:	APBA3
Alternative Name:	APBA3 (APBA3 Products)
Background:	Synonyms: Amyloid beta A4 precursor protein-binding family A member 3, Neuron-specific

Target Details

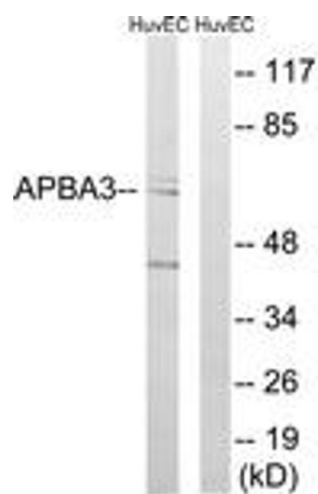
	X11L2 protein, Neuronal Munc18-1-interacting protein 3, Mint-3, Adapter protein X11gamma NCBI Gene Symbol: APBA3
Molecular Weight:	61 kDa
Gene ID:	9546
OMIM:	604262
UniProt:	O96018

Application Details

Application Notes:	WB: 1:500~1:1000 ELISA: 1:40000
Comment:	Unigene-Number: Hs.25527, Hs.465607 (NCBI Gene Symbol: APBA3)
Restrictions:	For Research Use only

Handling

Format:	Liquid
Concentration:	1 mg/mL
Buffer:	phosphate buffered saline (without Mg2+ and Ca2+), pH 7.4, 150 mM NaCl, 0.02 % sodium azide and 50 % glycerol.
Preservative:	Sodium azide
Precaution of Use:	This product contains sodium azide: a POISONOUS AND HAZARDOUS SUBSTANCE which should be handled by trained staff only.
Storage:	-20 °C
Storage Comment:	Stable at -20°C for at least 1 year.
Expiry Date:	12 months



Western Blotting

Image 1. Western blot analysis of extracts from HuvEc cells, using APBA3 Antibody. The lane on the right is treated with the synthesized peptide.