

Datasheet for ABIN1534633  
**anti-Calcium Responsive Transcription Factor (CARF) (AA 311-360) antibody**



[Go to Product page](#)

2 Images

## Overview

Quantity:	100 µg
Target:	Calcium Responsive Transcription Factor (CARF)
Binding Specificity:	AA 311-360
Reactivity:	Human
Host:	Rabbit
Clonality:	Polyclonal
Conjugate:	Un-conjugated
Application:	Western Blotting (WB), ELISA, Immunohistochemistry (IHC)

## Product Details

Immunogen:	The antiserum was produced against synthesized peptide derived from human ALS2CR8.
Isotype:	IgG
Specificity:	ALS2CR8 Antibody detects endogenous levels of total ALS2CR8 protein.
Purification:	The antibody was purified from rabbit antiserum by affinity-chromatography using immunogen.
Purity:	> 95 %

## Target Details

Target:	Calcium Responsive Transcription Factor (CARF)
Alternative Name:	ALS2CR8 ( <a href="#">CARF Products</a> )
Background:	Synonyms: Amyotrophic lateral sclerosis 2 chromosomal region candidate gene 8 protein,

## Target Details

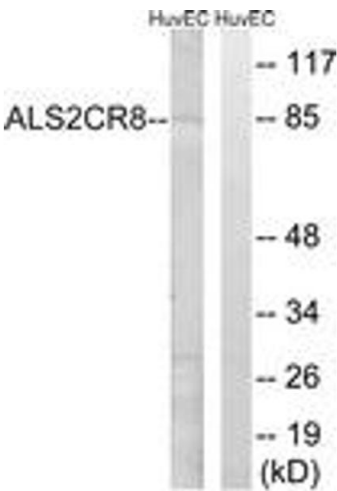
	Calcium-response factor, CaRF, Testis development protein NYD-SP24 NCBI Gene Symbol: ALS2CR8
Molecular Weight:	80 kDa
Gene ID:	79800
OMIM:	607586
UniProt:	<a href="#">Q8N187</a>

## Application Details

Application Notes:	WB: 1:500~1:1000 IHC: 1:50~1:100 ELISA: 1:40000
Comment:	Unigene-Number: Hs.444982 (NCBI Gene Symbol: ALS2CR8)
Restrictions:	For Research Use only

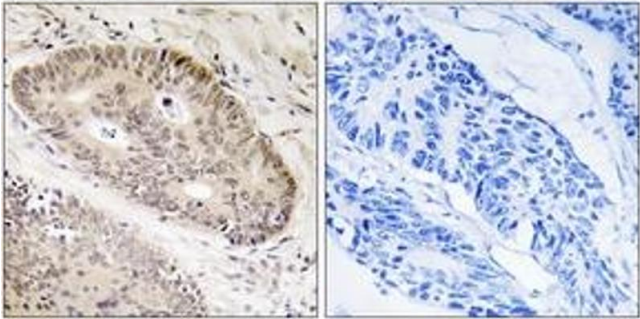
## Handling

Format:	Liquid
Concentration:	1 mg/mL
Buffer:	phosphate buffered saline (without Mg <sup>2+</sup> and Ca <sup>2+</sup> ), pH 7.4, 150 mM NaCl, 0.02 % sodium azide and 50 % glycerol.
Preservative:	Sodium azide
Precaution of Use:	This product contains sodium azide: a POISONOUS AND HAZARDOUS SUBSTANCE which should be handled by trained staff only.
Storage:	-20 °C
Storage Comment:	Stable at -20°C for at least 1 year.
Expiry Date:	12 months



Western Blotting

**Image 1.** Western blot analysis of extracts from HuvEc cells, using ALS2CR8 Antibody. The lane on the right is treated with the synthesized peptide.



Immunohistochemistry

**Image 2.** Immunohistochemistry analysis of paraffin-embedded human lung carcinoma tissue, using ALS2CR8 Antibody. The picture on the right is treated with the synthesized peptide.