



[Go to Product page](#)

Datasheet for ABIN1534635

## anti-AMOTL1 antibody (AA 441-490)

1 Image

1 Publication

### Overview

Quantity:	100 µg
Target:	AMOTL1
Binding Specificity:	AA 441-490
Reactivity:	Human, Mouse
Host:	Rabbit
Clonality:	Polyclonal
Conjugate:	This AMOTL1 antibody is un-conjugated
Application:	ELISA, Immunohistochemistry (IHC)

### Product Details

Immunogen:	The antiserum was produced against synthesized peptide derived from human AMOTL1.
Isotype:	IgG
Specificity:	AMOTL1 Antibody detects endogenous levels of total AMOTL1 protein.
Purification:	The antibody was purified from rabbit antiserum by affinity-chromatography using immunogen.
Purity:	> 95 %

### Target Details

Target:	AMOTL1
Alternative Name:	AMOTL1 ( <a href="#">AMOTL1 Products</a> )
Background:	Synonyms: Angiotenin-like protein 1

## Target Details

---

NCBI Gene Symbol: AMOTL1

Molecular Weight: 106 kDa

Gene ID: 154810

UniProt: [Q8IY63](#)

## Application Details

---

Application Notes: IHC: 1:50~1:100 ELISA: 1:10000

Comment: Unigene-Number: Hs.503594 (NCBI Gene Symbol: AMOTL1)

Restrictions: For Research Use only

## Handling

---

Format: Liquid

Concentration: 1 mg/mL

Buffer: phosphate buffered saline (without Mg<sup>2+</sup> and Ca<sup>2+</sup>), pH 7.4, 150 mM NaCl, 0.02 % sodium azide and 50 % glycerol.

Preservative: Sodium azide

Precaution of Use: This product contains sodium azide: a POISONOUS AND HAZARDOUS SUBSTANCE which should be handled by trained staff only.

Storage: -20 °C

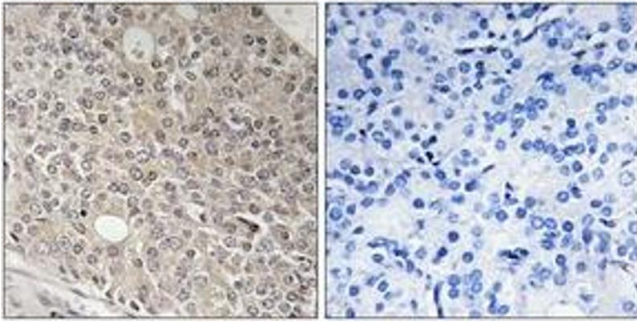
Storage Comment: Stable at -20°C for at least 1 year.

Expiry Date: 12 months

## Publications

---

Product cited in: Nakajima, Nakamura, Shigeeda, Tomoyasu, Deguchi, Tanita, Yamauchi: "The role of tumor necrosis factor- $\alpha$  and interferon- $\gamma$  in regulating angiotensin-like protein 1 expression in lung microvascular endothelial cells." in: **Allergy international : official journal of the Japanese Society of Allergy**, Vol. 62, Issue 3, pp. 309-22, (2014) ([PubMed](#)).



### Immunohistochemistry

**Image 1.** Immunohistochemistry analysis of paraffin-embedded human prostate carcinoma tissue, using AMOTL1 Antibody. The picture on the right is treated with the synthesized peptide.