

Datasheet for ABIN1534640
anti-C1orf135 antibody (AA 121-170)[Go to Product page](#)

2 Images

Overview

| | |
|----------------------|---|
| Quantity: | 100 µg |
| Target: | C1orf135 (AUNIP) |
| Binding Specificity: | AA 121-170 |
| Reactivity: | Human, Mouse, Rat |
| Host: | Rabbit |
| Clonality: | Polyclonal |
| Conjugate: | This C1orf135 antibody is un-conjugated |
| Application: | Western Blotting (WB), Immunofluorescence (IF), ELISA |

Product Details

| | |
|---------------|---|
| Immunogen: | The antiserum was produced against synthesized peptide derived from human AIBP. |
| Isotype: | IgG |
| Specificity: | AIBP Antibody detects endogenous levels of total AIBP protein. |
| Purification: | The antibody was purified from rabbit antiserum by affinity-chromatography using immunogen. |
| Purity: | > 95 % |

Target Details

| | |
|-------------------|---|
| Target: | C1orf135 (AUNIP) |
| Alternative Name: | AIBP (AUNIP Products) |
| Background: | Synonyms: Apolipoprotein A-I-binding protein, AI-BP |

Target Details

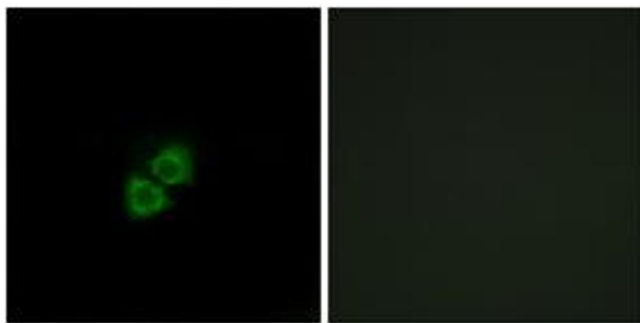
| | |
|-------------------|---------------------------|
| | NCBI Gene Symbol: APOA1BP |
| Molecular Weight: | 31 kDa |
| Gene ID: | 128240 |
| OMIM: | 608862 |
| UniProt: | Q8NCW5 |

Application Details

| | |
|--------------------|---|
| Application Notes: | WB: 1:500~1:1000 IF: 1:100~1:500 ELISA: 1:40000 |
| Comment: | Unigene-Number: Hs.528320 (NCBI Gene Symbol: APOA1BP) |
| Restrictions: | For Research Use only |

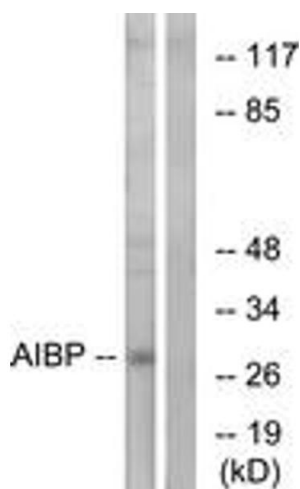
Handling

| | |
|--------------------|---|
| Format: | Liquid |
| Concentration: | 1 mg/mL |
| Buffer: | phosphate buffered saline (without Mg ²⁺ and Ca ²⁺), pH 7.4, 150 mM NaCl, 0.02 % sodium azide and 50 % glycerol. |
| Preservative: | Sodium azide |
| Precaution of Use: | This product contains sodium azide: a POISONOUS AND HAZARDOUS SUBSTANCE which should be handled by trained staff only. |
| Storage: | -20 °C |
| Storage Comment: | Stable at -20°C for at least 1 year. |
| Expiry Date: | 12 months |



Immunofluorescence

Image 1. Immunofluorescence analysis of A549 cells, using AIBP Antibody. The picture on the right is treated with the synthesized peptide.



Western Blotting

Image 2. Western blot analysis of extracts from HeLa cells, using AIBP Antibody. The lane on the right is treated with the synthesized peptide.